

## 2-pole filters in SMD package

### General application

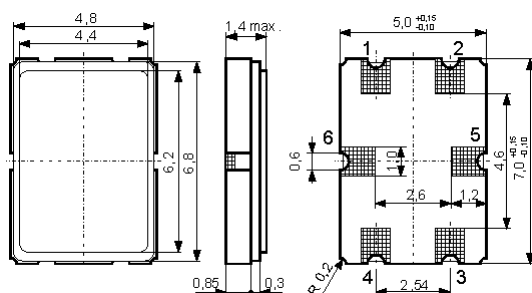
Wireless communication systems, measurement equipment

### Features

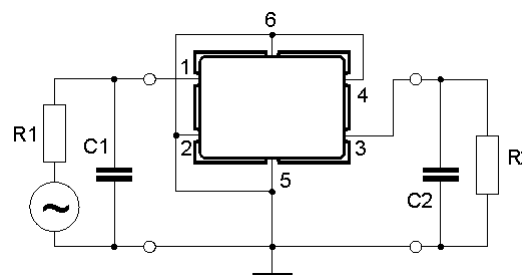
- 2-pole filters in one ceramic package SMD 7x5 mm
- custom specification available
- hermetically sealed by seam welding
- possible to deliver in tapes wound on reels, suitable for automatic assembly
- reflow solderable
- RoHS, PB-free
- high shock and vibration resistance



### Outline dimensions [mm]



### Wiring diagram



### Examples of custom filter types in ceramic packages

Type	Marking	Fo	Poles	Loss	Ripple	Bandwidth	Stop band	Impedance	Case
		[MHz]		[db]	[db]	[kHz]	[db] [kHz]	[Ω // pF]	
<a href="#">MCF 21.4-12/02</a>	M214-12	21.40	2	1.5	0.5	±6.0	20 ±25	1200 // 3.0	SMD 7x5
<a href="#">MCF 21.4-30/52</a>	M214A3	21.40	2	3.0	1.5	±15.0	35 ±150	3000 // +0.5	SMD 7x5
<a href="#">MCF 21.4-40/10</a>	21S40A	21.40	2	2.0	1.0	±20.0	15 ±60	3200 // -0.4	SMD 7x5
<a href="#">MCF 21.4-40/13</a>	M214A2	21.40	4	4.0	1.0	±20.0	40 ±67.5	4000 // -0.3	2x SMD 7x5
<a href="#">MCF 29.25-16/01</a>	M29.25A	29.25	2	3.0	1.0	±8.0	18 ±30	700 // +5.0	SMD 7x5
<a href="#">MCF 45.0-16/08</a>	M45A1	45.00	2	3.0	1.0	±8.0	16 ±30	600 // +3.0	SMD 7x5
<a href="#">MCF 45.0-70/01</a>	M45A3	45.00	2	3.0	1.0	±35.0	20 ±125	2400 // 0.15	SMD 7x5
<a href="#">MCF 45.0-100/S1</a>	M45S10	45.00	2	3.0	1.0	±50.0	20 ±180	2700 // -0.5	SMD 7x5
<a href="#">MCF 50.0-40/01</a>	M50A2	50.00	2	3.0	1.0	±20.0	20 ±125	1500 // +0.3	SMD 7x5
<a href="#">MCF 70.0-5.0/09</a>	70-5S1	70.00	2	5.0	1.0	±2.5	30 ±25	1000 // 0.0	SMD 7x5
<a href="#">MCF 73.35-16/01</a>	73S16A	73.35	2	5.0	1.0	±8.0	15 ±30	2500 // -0.8	SMD 7x5
<a href="#">MCF 80.0-2.0/01</a>	80-2S1	80.00	2	5.0	2.0	±1.0	30 ±30	680 // +0.2	SMD 7x5
<a href="#">MCF 90.0-7.0/01</a>	M90.0A	90.00	2	4.0	1.0	±3.5	30 ±45	1000 // +0.2	SMD 7x5
<a href="#">MCF 100.0-8.0/01</a>	M100A	100.0	2	4.0	1.0	±4.0	30 ±50	800 // +0.65	SMD 7x5
<a href="#">MCF 100.0-8.0/02</a>	100-8B	100.0	2	5.0	1.5	±2.0	30 ±50	500 // +0.8	SMD 7x5
<a href="#">MCF 146.65-16/S1</a>	146-16	146.650	2	4.5	1.0	±8.0	40 ±200	600 // -0.3	SMD 7x5
<a href="#">MCF 173.075-16/01</a>	173-16	173.075	2	4.0	1.0	±8.0	20 ±70	300 // +0.1	SMD 7x5
<a href="#">MCF 200.0-8.0/01</a>	M200A	200.0	2	4.5	1.0	±4.0	20 ±40	800 // -0.4	SMD 7x5
<a href="#">MCF 204.8-8.0/02</a>	204-8B	204.800	2	6.0	1.5	±4.0	30 ±80	600 // -0.8	SMD 7x5