

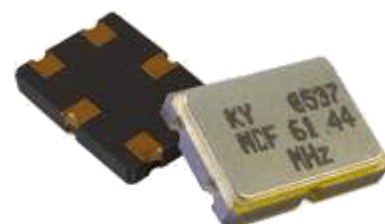
## 4-pole filters in SMD package

### Typical application

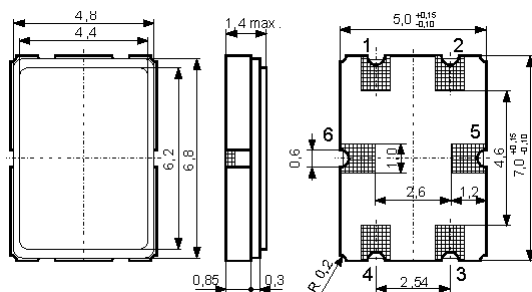
wireless communication systems, measurement equipment

### Features

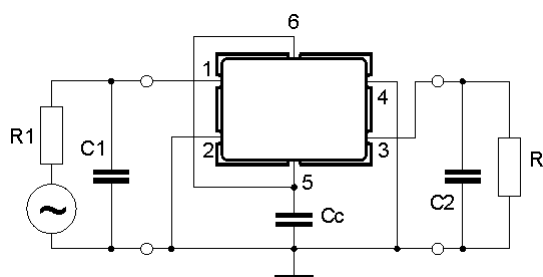
- 4-pole filters in one ceramic package SMD 7x5 mm
- custom specification available
- high attenuation in the stop band
- hermetic sealing by seam welding
- can be delivered in tapes wound on reels, suitable for automatic assembly
- reflow solderable
- RoHS, PB-free
- very good shock and vibration resistance
- external coupling capacitor is required



### Outline dimensions [mm]



### Wiring diagram



### Examples of custom filter types in ceramic packages

Type	Marking	Fo	Poles	Loss	Ripple	Bandwidth	Stop band	Impedance	Case
		[MHz]		[db]	[db]	[kHz]	[db] [kHz]	[Ω // pF]	
<a href="#">MCF 21.4-30/04</a>	M214B3	21.400	4	2.5	1.0	±15.0	40 ±50	4250 // -1.5	SMD 7x5
<a href="#">MCF 25.5-10/04</a>	M25.5B4	25.500	4	3.5	0.4	±5.0	40 ±27	1000 // 3.0	SMD 7x5
<a href="#">MCF 35.25-22/03</a>	M35.25B3	35.250	4	4.0	1.0	±11.0	15 ±28	2400 // 0.1	SMD 7x5
<a href="#">MCF 35.25-40/04</a>	M35.25B4	35.250	4	4.0	1.0	±20.0	15 ±40	4200 // -0.6	SMD 7x5
<a href="#">MCF 64.455-15/04</a>	M64.455-15/04	64.455	4	6.0	2.0	±7.5	40 ±40	350 // 3.5	SMD 7x5
<a href="#">MCF 70.0-50/16</a>	M70A5	70.0	4	3.0	1.0	±25.0	20 ±60	2000 // 0.2	SMD 7x5
<a href="#">MCF 70.05-20/04</a>	M7005A	70.050	4	4.5	1.0	±10.0	20 ±25	800 // 1.0	SMD 7x5