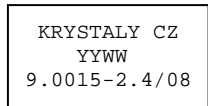


SPECIFICATION FOR CRYSTAL FILTER MCF 9.0015-2.4/08

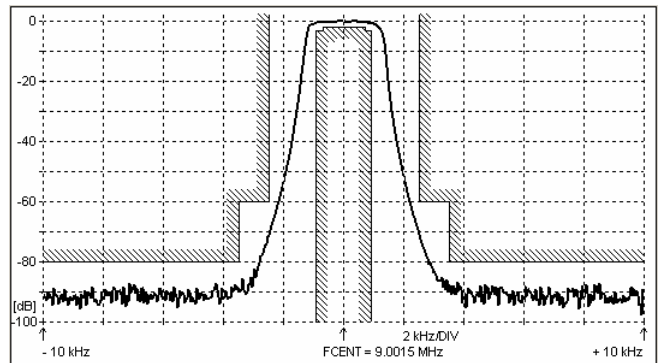
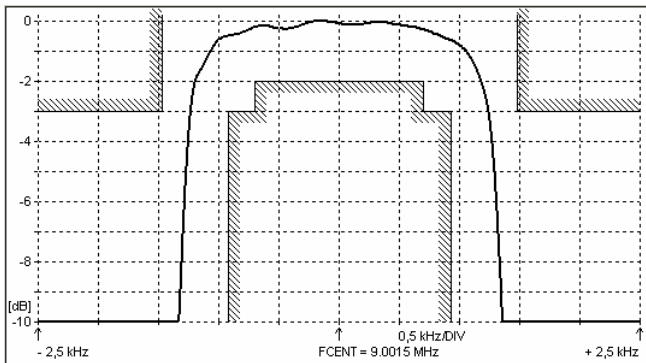
Number: 92 278
Drawing: 61 9533

1. Electric values

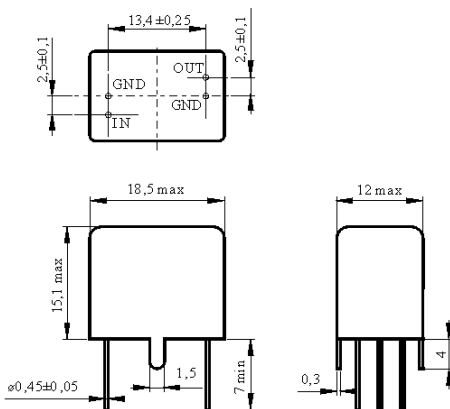
1.0 Number of poles :	8
1.1 Nominal centre frequency f_{nom} :	9.0015 MHz
1.2 Centre frequency f_c :	9.0015 MHz \pm 150 Hz
1.2 Bandwidth between 3 dB frequencies :	2.4 \pm 0.25 KHz
1.3 Ripple at $f_{nom} \pm 0.7$ kHz :	\leq 2.0 dB
1.4 Insertion loss :	\leq 5.0 dB
1.5 Stop band $f_{nom} \pm 2.5$ kHz :	\geq 60 dB
$f_{nom} \pm 3.5 \dots \pm 300$ kHz :	\geq 80 dB
1.6 Terminating impedance (input and output) :	630 Ohm // 19 pF
1.7 Operating temperature range :	-20°C to +70°C
1.8 Case :	KV 5 (18.5 x 12.0 x 15.1 mm)
1.9 Marking on the case :	YY = year WW = week



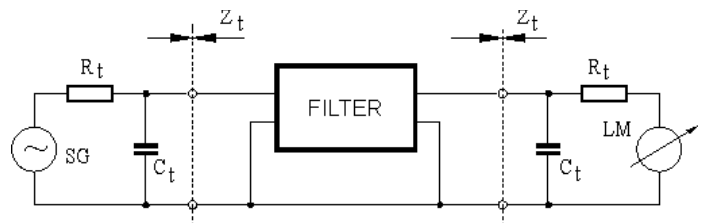
2. Characteristics MCF 9.0015-2.4/08



Dimensions [mm] Case KV 5



Measurement Circuit



edited	19.03.2013	P. Seidl
--------	------------	----------