



SPECIFICATION FOR CRYSTAL FILTER
MCF 10.0-16/08

Number: 91 773
Drawing: 61 9533

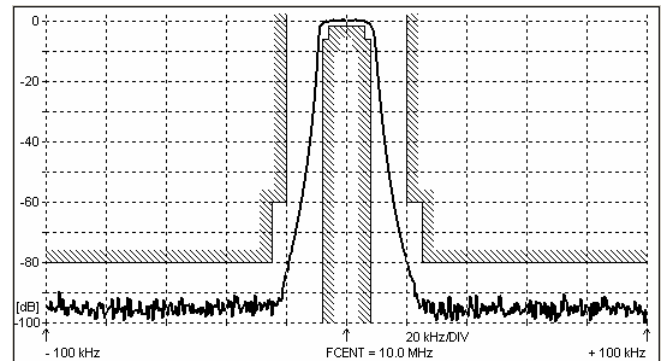
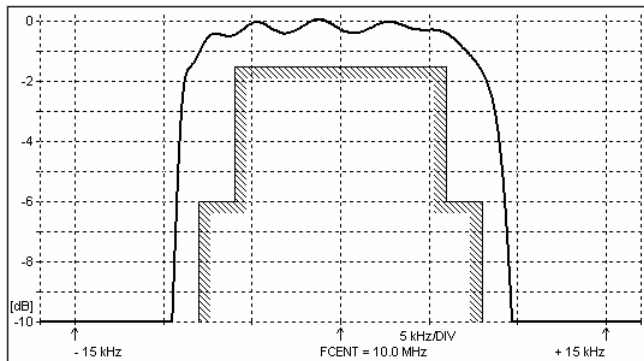
1. Electric values

- 1.0 Number of poles : 8
- 1.1 Nominal centre frequency f_{nom} : 10.0 MHz
- 1.2 Tolerance of centre frequency f_c : $f_{nom} \pm 300$ Hz
- 1.3 Bandwidth between 6 dB frequencies : $\geq \pm 8.0$ kHz
- 1.4 Ripple at $f_{nom} \pm 6.0$ kHz : ≤ 1.5 dB
- 1.5 Insertion loss : ≤ 4.0 dB
- 1.6 Stop band $f_{nom} \pm 20$ kHz : ≥ 60 dB
- $f_{nom} \pm 25$ kHz : ≥ 80 dB
- 1.7 Ultimate attenuation : ≥ 90 dB
- 1.8 Terminating impedance (input and output) : 9000 Ohm // -0.5 pF
- 1.9 Operating temperature range : -40°C až +70°C
- 1.10 Case : KV 5 (18.5 x 12.0 x 15.1 mm)
- 1.11 Marking on the case :

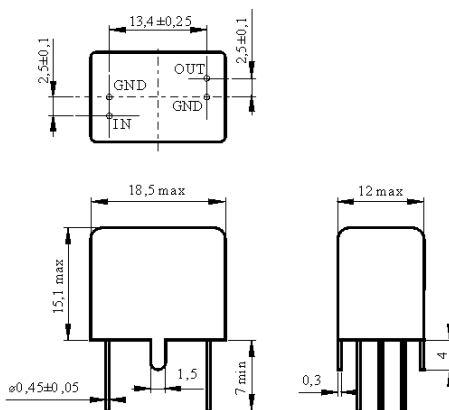
KRYSTALY CZ
YYWW
10.0-16/08

YY = year
WW = week

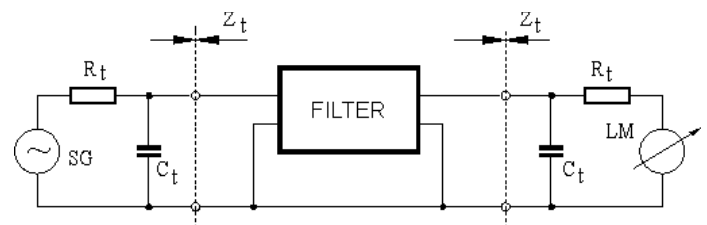
2. Characteristics MCF 10.0-16/08



Dimensions [mm]
Case KV 5



Measurement Circuit



edited 14.04.2011 P. Seidl