

**SPECIFICATION FOR CRYSTAL FILTER**  
**MCF 100.0-15/02**

**Number: 91 860**  
**Drawing: 61 9570**

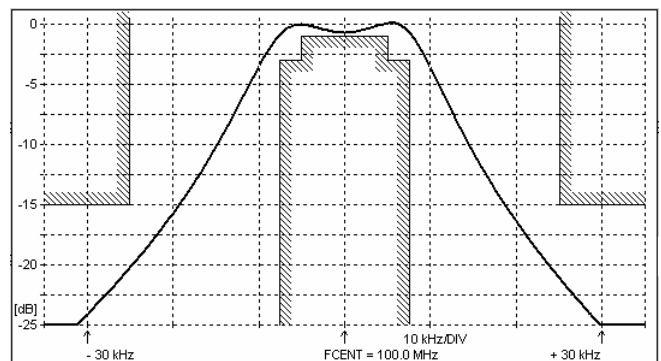
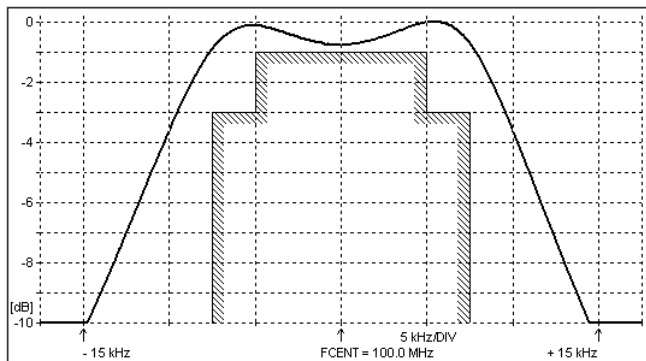
**1. Electric values**

- |                                                        |                                |
|--------------------------------------------------------|--------------------------------|
| 1.0 Number of poles :                                  | 2 (5 th overtone)              |
| 1.1 Nominal centre frequency $f_{nom}$ :               | 100.0 MHz                      |
| 1.2 Bandwidth between 3 dB frequencies :               | $\geq \pm 7.5$ kHz             |
| 1.3 Ripple at $f_{nom} \pm 5.0$ kHz :                  | $\leq 1.0$ dB                  |
| 1.4 Insertion loss :                                   | $\leq 2.0$ dB                  |
| 1.5 Stop band $f_{nom} \pm 25$ kHz .... $\pm 10$ MHz : | $\geq 15$ dB (except spurious) |
| $f_{nom} \pm 10$ MHz :                                 | $\geq 30$ dB                   |
| 1.6 Terminating impedance ( input and output ) :       | 1450 Ohm // -1.2 pF            |
| 1.7 Operating temperature range :                      | -20°C to +70°C                 |
| 1.8 Case :                                             | UM-1                           |
| 1.9 Marking on the case :                              | YY = year<br>WW = week         |

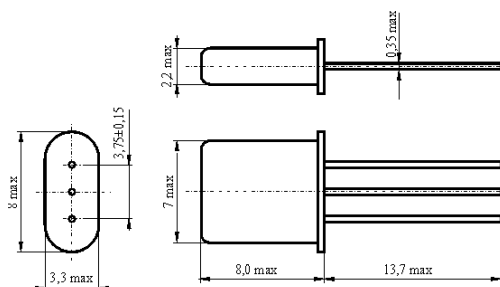
MCF 100.0- 15/02
------------------------

KRYSTALY CZ YYWW
------------------------

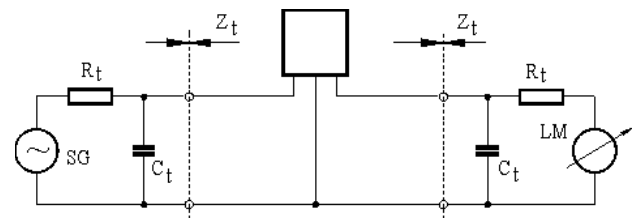
**2. Characteristics MCF 100.0-15/02**



**Dimensions [mm]**  
**Case UM-1**



**Measurement Circuit**



edited	07.10.2011	P. Seidl
--------	------------	----------