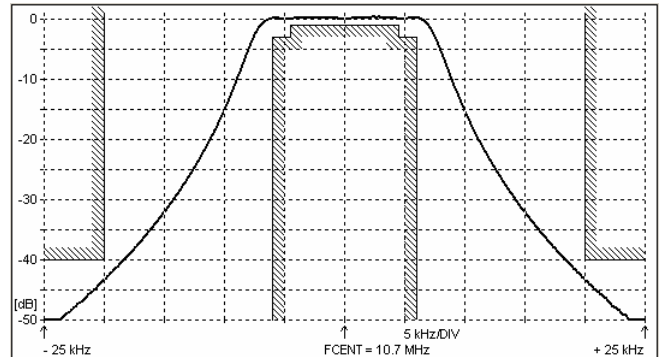
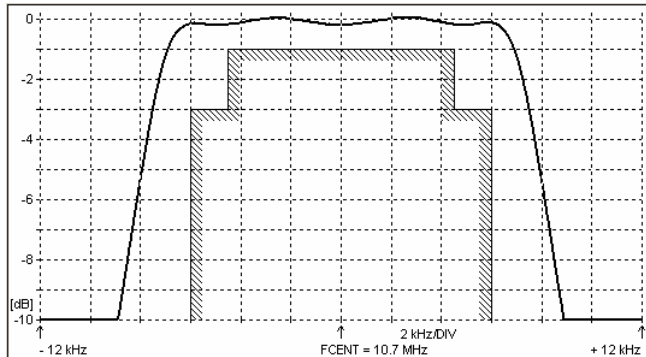
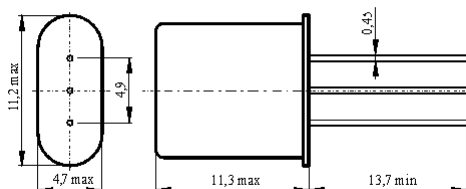
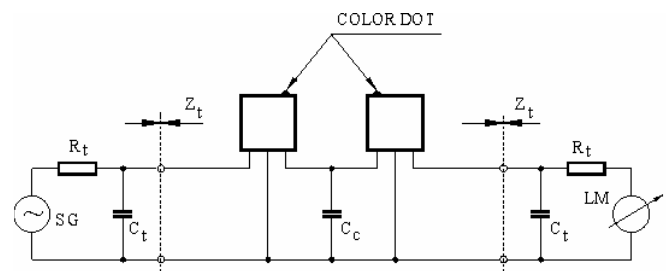
**SPECIFICATION FOR CRYSTAL FILTER
MCF 10.7-12B**Number: 91 782
Drawing: 61 9573**1. Electric values**

1.0 Number of poles :	4
1.1 Nominal centre frequency f_{nom} :	10.7 MHz
1.2 Bandwidth between 3 dB frequencies :	$\geq \pm 6.0$ kHz
1.3 Ripple in band $f_{nom} \pm 4.5$ kHz :	≤ 1.0 dB
1.4 Insertion loss :	≤ 2.5 dB
1.5 Stop band $f_{nom} \pm 20$ kHz :	≥ 40 dB
$f_{nom} + 300 \dots + 1000$ kHz :	≥ 50 dB
$f_{nom} - 200 \dots - 1000$ kHz :	≥ 70 dB
1.6 Terminating impedance (input and output) :	3300 Ohm // 1.5 pF
Coupling capacitance :	5.5 pF
1.7 Operating temperature range :	-30°C až +70°C
1.8 Case :	2 x HC-49U / 3pin
1.9 Marking on the case :	YY = year WW = week

KRYSTALY CZ 10.7-12B YYWW

2. Characteristics MCF 10.7-12B**Dimensions [mm]
Case HC-49U / 3 pin****Measurement Circuit**

edited 12.08.2011 P. Seidl