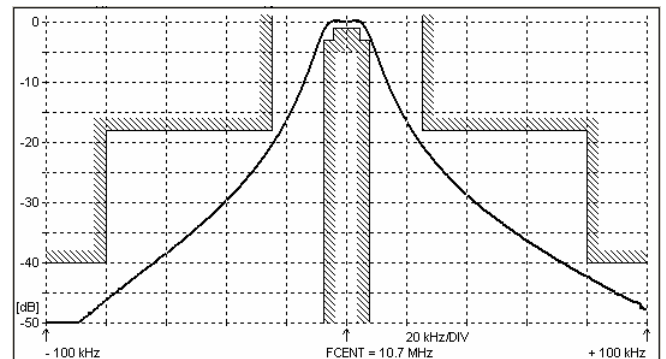
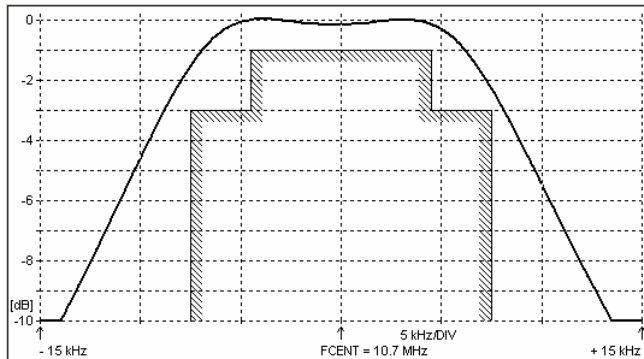
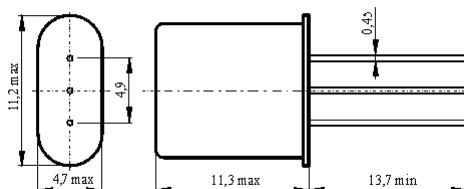
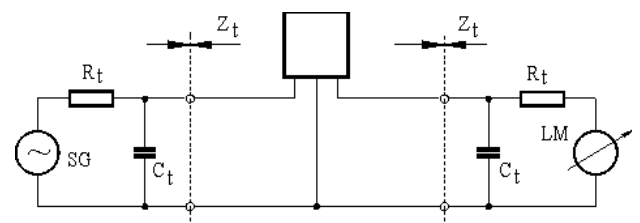


**SPECIFICATION FOR CRYSTAL FILTER**
MCF 10.7-15/02Number: 91 854
Drawing: 61 9569**1. Electric values**

1.0 Number of poles :	2
1.1 Nominal centre frequency f_{nom} :	10.7 MHz
1.2 Bandwidth between 3 dB frequencies :	$\geq \pm 7.5$ kHz
1.3 Ripple in band $f_{nom} \pm 4.5$ kHz :	≤ 1.0 dB
1.4 Insertion loss :	≤ 1.0 dB
1.5 Stop band $f_{nom} \pm 25$ kHz :	≥ 18 dB
$f_{nom} \pm 80 \dots \pm 500$ kHz :	≥ 40 dB
1.6 Spurious :	≥ 25 dB
1.7 Terminating impedance (input and output) :	3000 Ohm // 0 pF
1.8 Operating temperature range :	-40°C až +80°C
1.9 Case :	HC-49U / 3pin
1.10 Marking on the case :	YY = year WW = week

KRYSTALY CZ 10.7-15/02 YYWW

2. Characteristics MCF 10.7-15/02**Dimensions [mm]**
Case HC-49U / 3 pin**Measurement Circuit**

edited 18.08.2011 P. Seidl