

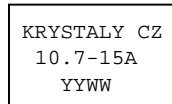


**SPECIFICATION FOR CRYSTAL FILTER  
MCF 10.7-15A**

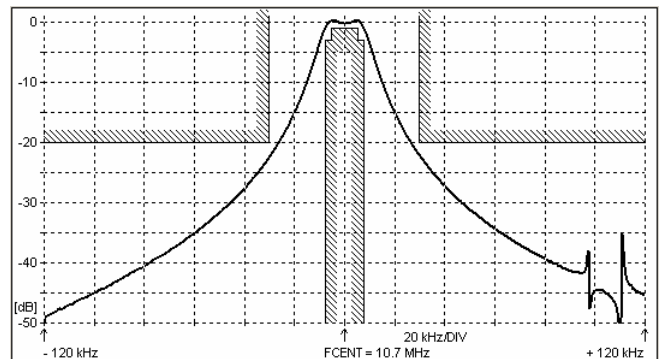
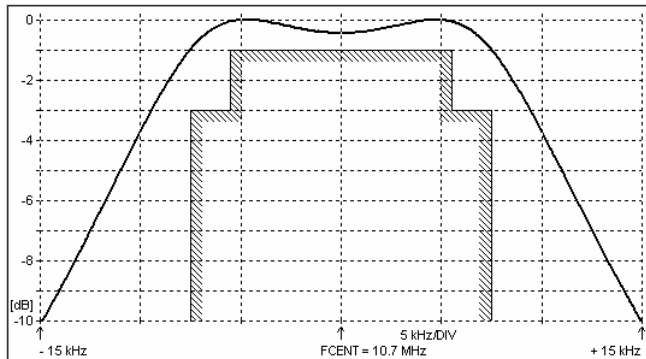
**Number: 91 713  
Drawing: 61 9569**

**1. Electric values**

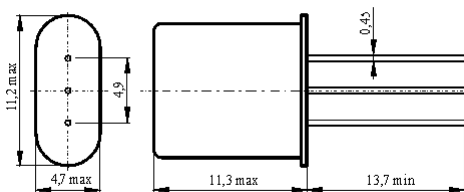
1.0 Number of poles :	2
1.1 Nominal centre frequency $f_{nom}$ :	10.7 MHz
1.2 Bandwidth between 3 dB frequencies :	$\geq \pm 7.5$ kHz
1.3 Ripple in band $f_{nom} \pm 5.5$ kHz :	$\leq 1.0$ dB
1.4 Insertion loss :	$\leq 0.5$ dB
1.5 Stop band $f_{nom} \pm 30 \dots \pm 150$ kHz :	$\geq 20$ dB
$f_{nom} \pm 150 \dots \pm 500$ kHz :	$\geq 40$ dB
1.6 Spurious :	$\geq 15$ dB
1.7 Terminating impedance ( input and output ) :	3000 Ohm // 0 pF
1.8 Operating temperature range :	-25°C až +70°C
1.9 Case :	HC-49U / 3pin
1.10 Marking on the case :	YY = year WW = week



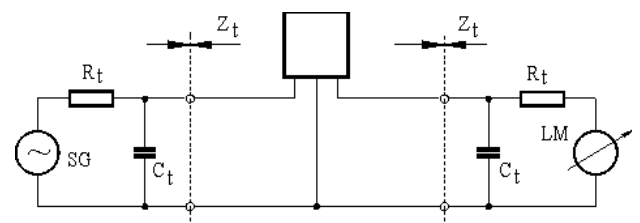
**2. Characteristics MCF 10.7-15A**



**Dimensions [mm]  
Case HC-49U / 3 pin**



**Measurement Circuit**



edited 17.08.2011 P. Seidl