

# SPECIFICATION FOR CRYSTAL FILTER MCF 10.7-22/24

Number: 92 421  
Drawing: 71 0068

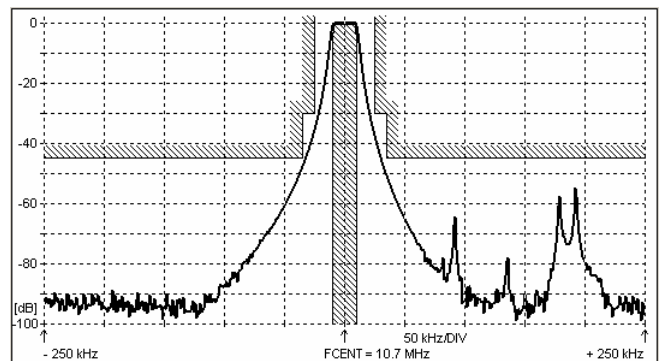
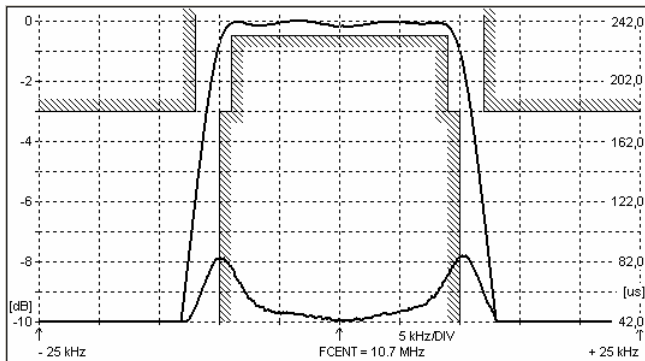
## 1. Electric values

- 1.0 Number of poles : 4
- 1.1 Nominal centre frequency  $f_{nom}$  : 10.7 MHz
- 1.2 Bandwidth between 3 dB frequencies :  $\geq \pm 10.0$  kHz  
 $\leq \pm 12.0$  kHz
- 1.3 Ripple at  $f_{nom} \pm 9.0$  kHz :  $\leq 0.5$  dB
- 1.4 Insertion loss :  $\leq 3.0$  dB
- 1.5 Group delay distortion  $f_{nom} \pm 9.0$  kHz :  $\leq 40$   $\mu$ s  
 $f_{nom} \pm 6.0$  kHz :  $\leq 15$   $\mu$ s
- 1.6 Stop band  $f_{nom} \pm 25$  kHz :  $\geq 30$  dB  
 $f_{nom} \pm 35$  kHz .....  $\pm 300$  kHz :  $\geq 45$  dB  
 $f_{nom} \pm 1$  MHz .....  $\pm 5$  MHz :  $\geq 60$  dB
- 1.7 Terminating impedance ( input and output ) : 910 Ohm // 25 pF
- 1.8 Operating temperature range : -40°C to +85°C
- 1.9 Case : KF 17.8 (38.4 x 18.2 x 8.0 mm)
- 1.10 Marking on the case :

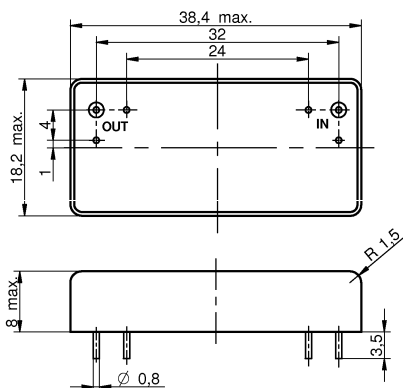
KRYSTALY HK  
YYWW  
10.7-22/24

YY = year  
WW = week

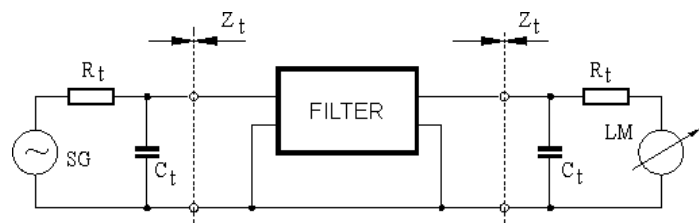
## 2. Characteristics MCF 10.7-22/24



### Dimensions [mm] Case KF-17.8



### Measurement Circuit



edited 28.02.2017 P. Seidl