

SPECIFICATION FOR CRYSTAL FILTER MCF 14.17...14.38-30/04

Number: 92 242
Drawing: 61 9573

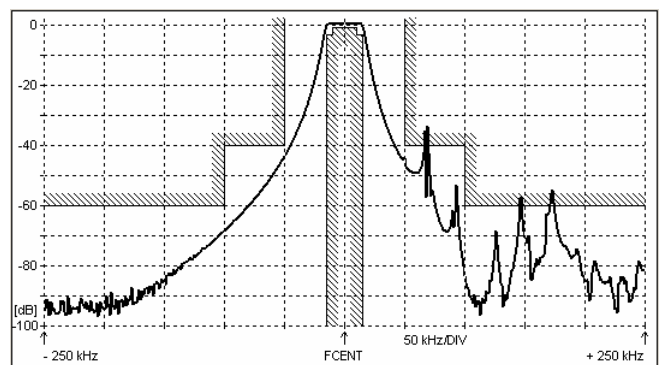
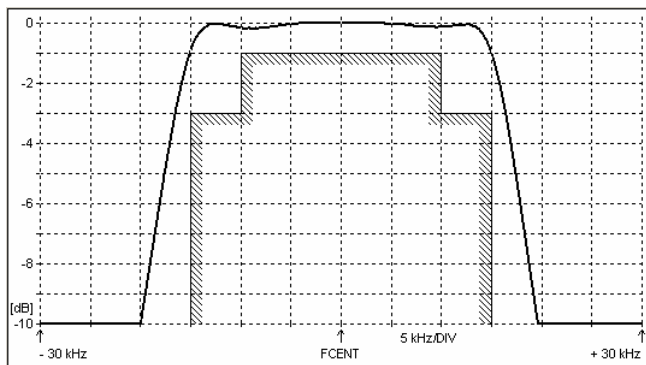
= This set of crystal filters is determined for the preselector of amateur transceivers =

1. Electric values

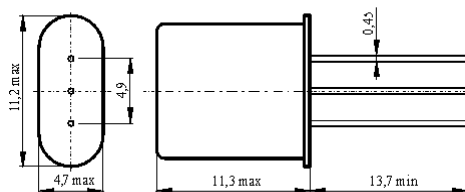
1.0 Number of poles :	4
1.1 Nominal centre frequency f_{nom} :	14.17 MHz, 14.20 MHz, 14.24 MHz 14.28 MHz, 14.32 MHz, 14.35 MHz 14.38 MHz
1.2 Bandwidth between 3 dB frequencies :	$\geq \pm 15$ kHz
1.3 Ripple in band $f_{nom} \pm 10$ kHz :	≤ 1.0 dB
1.4 Insertion loss :	≤ 2.5 dB
1.5 Stop band $f_{nom} \pm 50$ kHz :	≥ 40 dB
$f_{nom} \pm 100 \dots \pm 1000$ kHz :	≥ 60 dB
1.6 Spurious :	≥ 25 dB
1.7 Terminating impedance (input and output) :	3200 Ohm // 0.2 pF
Coupling capacitance :	1.85 pF
1.8 Operating temperature range :	-20°C to +70°C
1.9 Case :	2 x HC-49U / 3pin
1.10 Marking on the case :	YY = year WW = week

KRYSTALY CZ
14.xx-30/04
YYWW

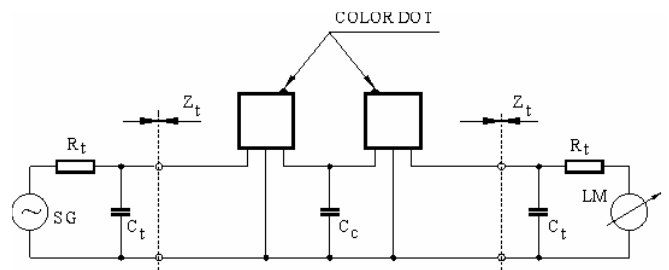
2. Characteristics MCF 14.17...14.38-30/04



Dimensions [mm] Case HC-49U / 3 pin



Measurement Circuit



edited	28.05.2012	P. Seidl
--------	------------	----------