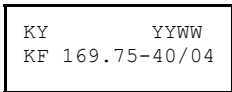


SPECIFICATION FOR CRYSTAL FILTER KF 169.75-40/04

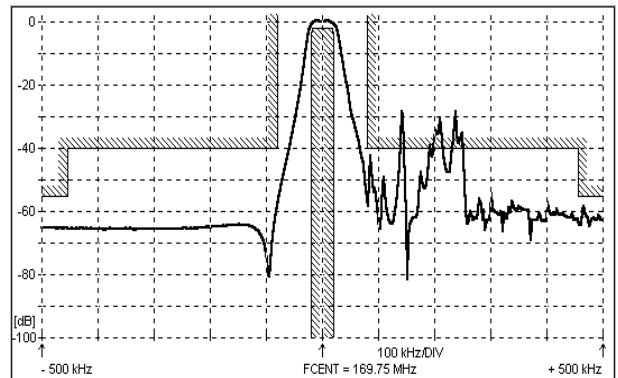
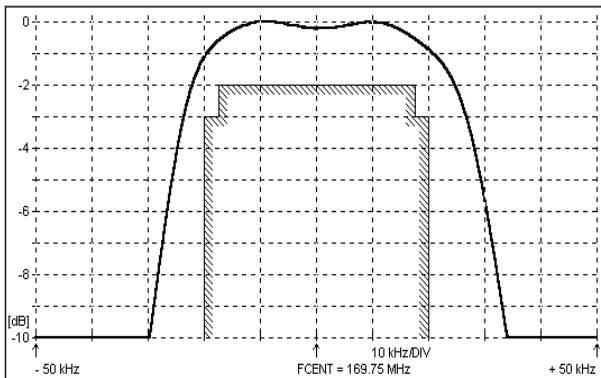
Number: 92 365
Drawing: 61 9578

1. Electric values

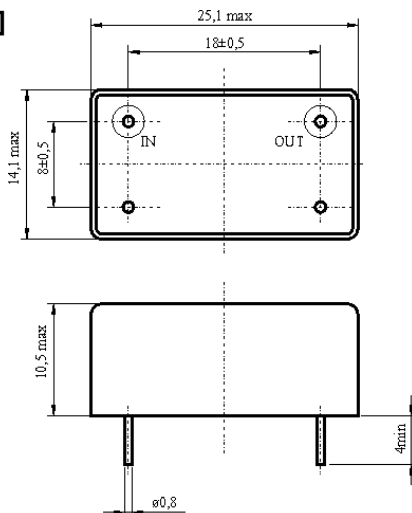
1.0 Number of poles:	4
1.1 Nominal centre frequency f _{nom} :	169 750 kHz (5 th overtone)
1.2 Bandwidth between 3 dB frequencies:	>± 20 kHz
1.3 Ripple (f _{nom} ± 17.5 kHz) :	< 2.0 dB
1.4 Insertion loss:	< 7.0 dB
1.5 Group delay distortion:	< 25 μs
1.6 Stop band: f _{nom} ± 80 kHz:	> 40 dB
f _{nom} ± 455 kHz:	> 55 dB
1.7 Alternate attenuation:	> 55 dB
1.8 Spurious f _{nom} +80 kHz...+500 kHz:	> 20 dB
1.9 Terminating impedance Input and Output :	50 Ohm // 0 pF
1.10 Maximum input power level (working / non-damaged):	-10 / +5 dBm
1.11 Intermodulation (InLevel =0 dBm) f _{nom} ±100 kHz and ±200 kHz:	> 58 dB
1.12 Operating temperature range:	- 20°C až + 70°C
1.13 Case:	KF13 (25 x 14 x 10 mm)
1.14 Marking on the case :	YY - year WW - week



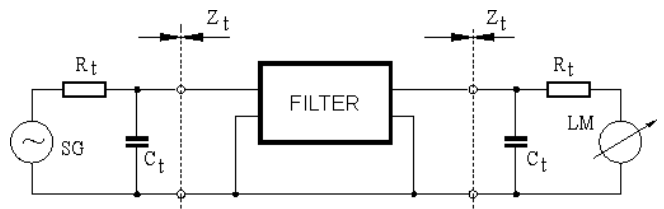
2. Characteristics KF 169.75-40/04



Dimensions [mm] Case KF13



Measurement Circuit



edited | 02.11.2015 | P.Jungling