



SPECIFICATION FOR CRYSTAL FILTER
MCF 21.4-7.5/08

Number: 91 977
Drawing: 61 9583

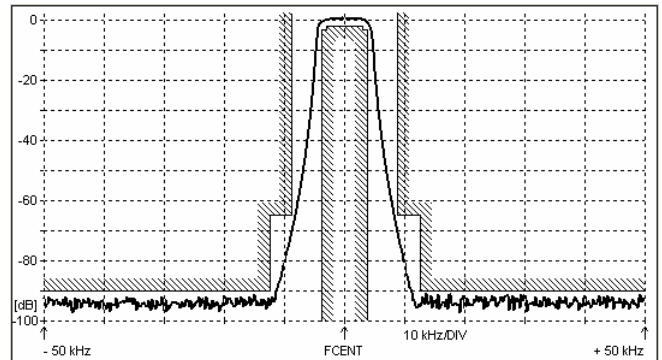
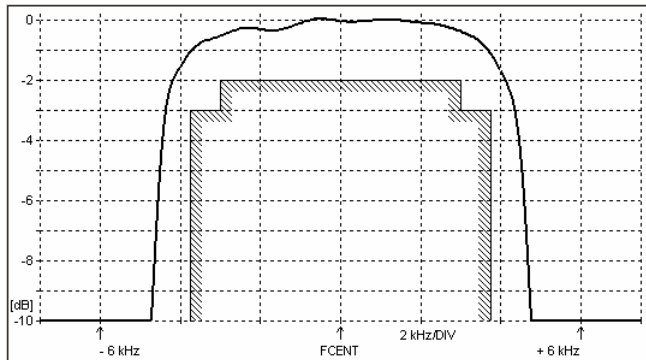
1. Electric values

- 1.0 Number of poles : 8
- 1.1 Nominal centre frequency f_{nom} : 21.4 MHz
- 1.2 Bandwidth between 3 dB frequencies : $\geq \pm 3.75$ kHz
- 1.3 Ripple at f_{nom} ± 3.0 kHz : ≤ 2.0 dB
- 1.4 Insertion loss : ≤ 3.5 dB
- 1.5 Stop band: f_{nom} ± 8.75 kHz : ≥ 65 dB
f_{nom} $\pm 12.5 \dots \pm 500$ kHz : ≥ 90 dB (except spurious)
- 1.6 Terminating impedance (input and output) : 850 Ohm // 5.0 pF
- 1.7 Operating temperature range : -20°C až +70°C
- 1.8 Case : KV 3 (14 x 8.7 x 11.5 mm)
- 1.9 Marking on the case :

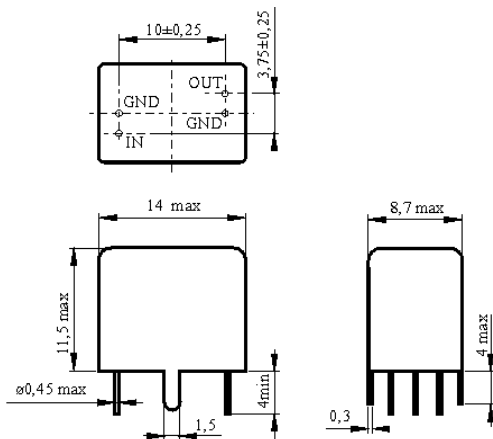
KRYSTALY CZ YYWW 21.4-7.5/08

YY = year
WW = week

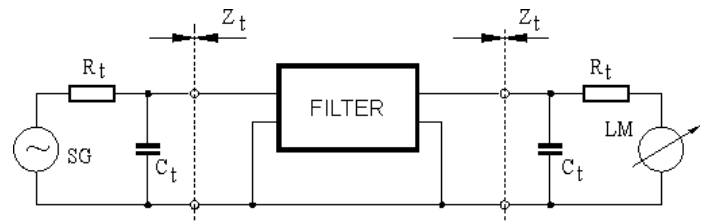
2. Characteristics MCF 21.4-7.5/08



Dimensions [mm]
Case KV 3



Measurement Circuit



edited	29.11.2010	P. Seidl
--------	------------	----------