

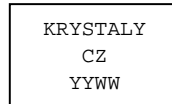
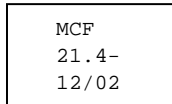


**SPECIFICATION FOR CRYSTAL FILTER**  
**MCF 21.4-12/02**

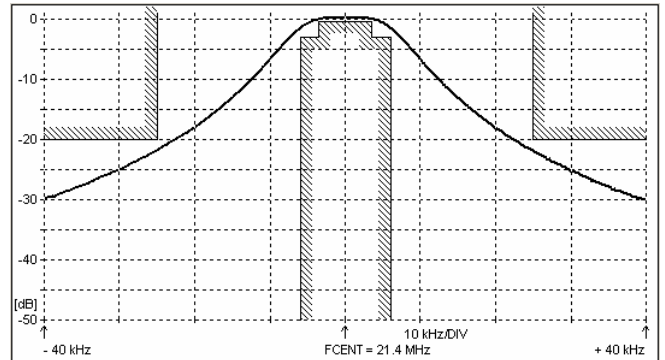
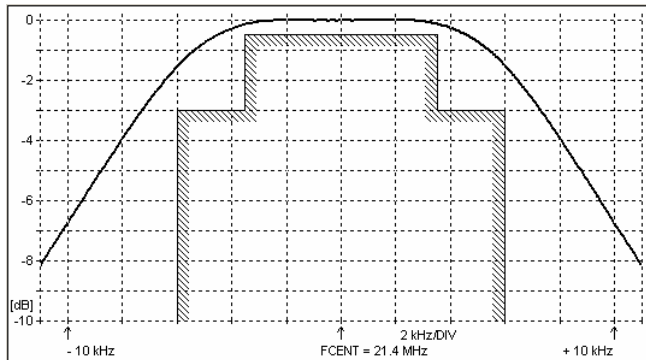
**Number: 91 785**  
**Drawing: 61 9570**

**1. Electric values**

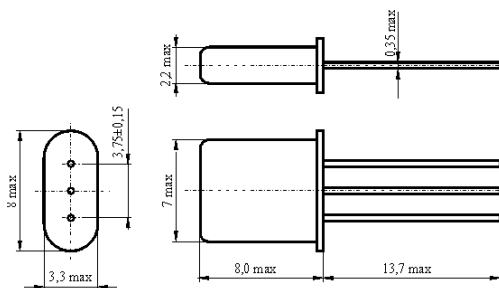
1.0 Number of poles :	2
1.1 Nominal centre frequency $f_{nom}$ :	21.4 MHz
1.2 Bandwidth between 3 dB frequencies :	$\geq \pm 6.0$ kHz
1.3 Ripple at $f_{nom} \pm 3.5$ kHz :	$\leq 0.5$ dB
1.4 Insertion loss :	$\leq 1.5$ dB
1.5 Stop band: $f_{nom} \pm 25$ kHz :	$\geq 20$ dB
$f_{nom} + 350 \dots + 1000$ kHz :	$\geq 30$ dB
$f_{nom} - 200 \dots - 1000$ kHz :	$\geq 50$ dB
1.6 Terminating impedance ( input and output ) :	1200 Ohm // 3.0 pF
1.7 Operating temperature range :	-20°C až +70°C
1.8 Case :	UM-1
1.9 Marking on the case :	YY = year WW = week



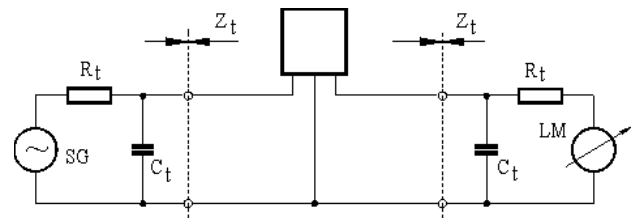
**2. Characteristics MCF 21.4-12/02**



**Dimensions [mm]**  
**Case UM-1**



**Measurement Circuit**



edited 25.03.2011 P. Seidl