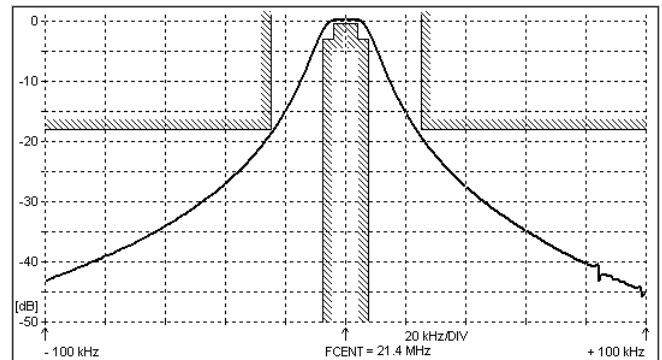
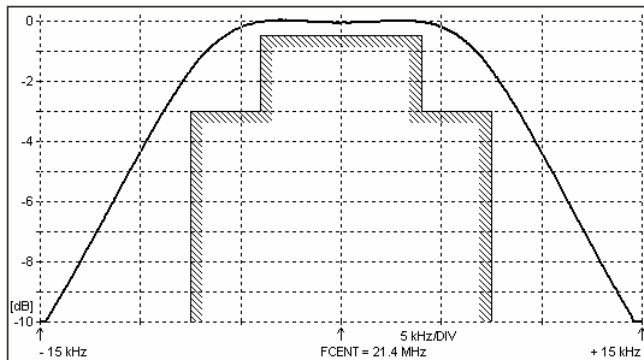
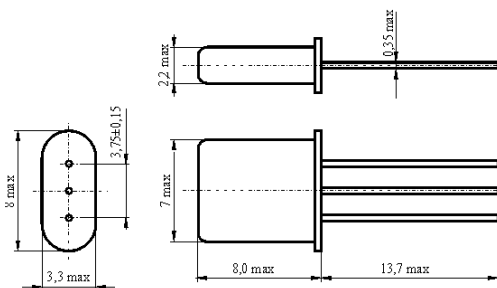
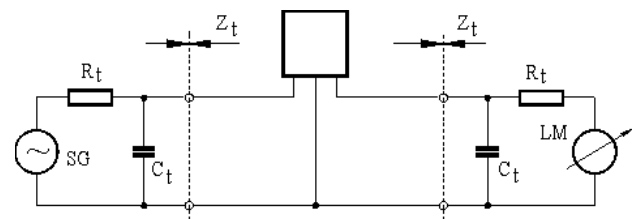
**SPECIFICATION FOR CRYSTAL FILTER**
MCF 21.4-15/02Number: 91 755
Drawing: 61 9570**1. Electric values**

1.0 Number of poles :	2
1.1 Nominal centre frequency f_{nom} :	21.4 MHz
1.2 Bandwidth between 3 dB frequencies :	$\geq \pm 7.5$ kHz
1.3 Ripple at $f_{nom} \pm 4.0$ kHz :	≤ 0.5 dB
1.4 Insertion loss :	≤ 1.5 dB
1.5 Stop band $f_{nom} \pm 25$ kHz :	≥ 18 dB
$f_{nom} \pm 350 \dots \pm 1000$ kHz :	≥ 35 dB
$f_{nom} - 910$ kHz :	≥ 50 dB
1.6 Spurious $f_{nom} + 50 \dots + 300$ kHz :	≥ 14 dB
1.7 Terminating impedance (input and output) :	1600 Ohm // 4.0 pF
1.8 Operating temperature range :	-25°C až +70°C
1.9 Case :	UM-1

1.10 Marking on the case :

MCF 21.4- 15/02

KRYSTALY CZ YYWW

YY = year
WW = week**2. Characteristics MCF 21.4-15/02****Dimensions [mm]**
Case UM-1**Measurement Circuit**

edited	18.07.2011	P. Seidl
--------	------------	----------