



SPECIFICATION FOR CRYSTAL FILTER MCF 21.4-15/08

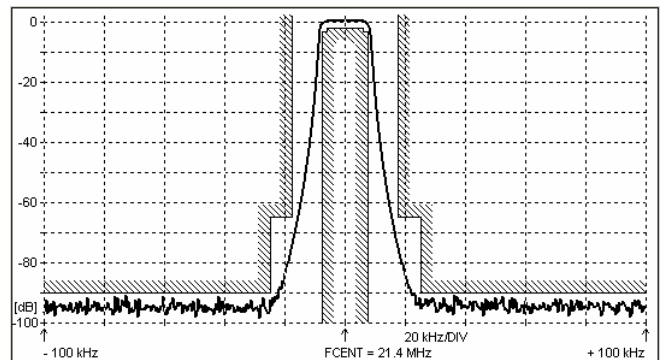
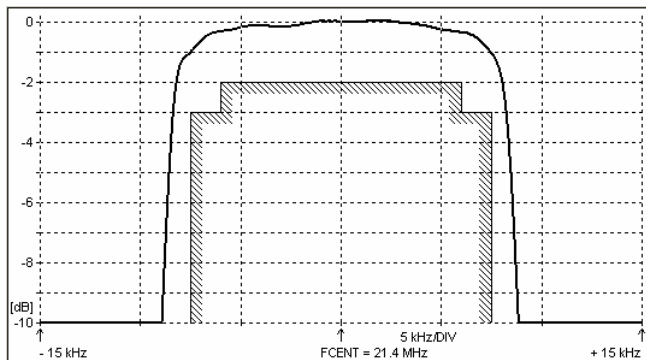
Number: 91 976
Drawing: 61 9583

1. Electric values

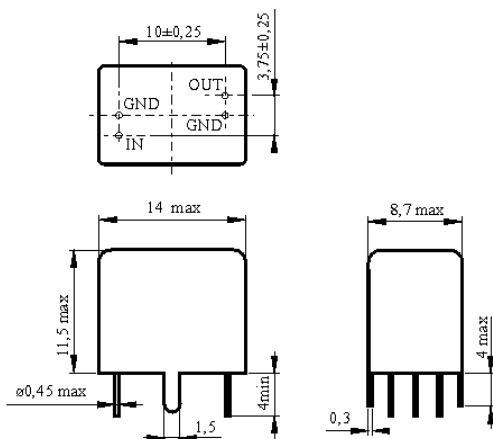
- | | |
|--|---------------------------|
| 1.0 Number of poles : | 8 |
| 1.1 Nominal centre frequency f _{nom} : | 21.4 MHz |
| 1.2 Bandwidth between 3 dB frequencies : | ≥ ± 7.5 kHz |
| 1.3 Ripple at f _{nom} ± 6.0 kHz : | ≤ 2.0 dB |
| 1.4 Insertion loss : | ≤ 3.5 dB |
| 1.5 Stop band: f _{nom} ± 17.5 kHz : | ≥ 65 dB |
| f _{nom} ± 25 kHz : | ≥ 90 dB |
| f _{nom} ± 25 ... ± 5000 kHz : | ≥ 90 dB (except spurious) |
| 1.6 Terminating impedance (input and output) : | 1800 Ohm // 1.0 pF |
| 1.7 Operating temperature range : | -20°C to +70°C |
| 1.8 Case : | KV 3 (14 x 8.7 x 11.5 mm) |
| 1.9 Marking on the case : | YY = year
WW = week |

KRYSTALY CZ YYWW 21.4-15/08

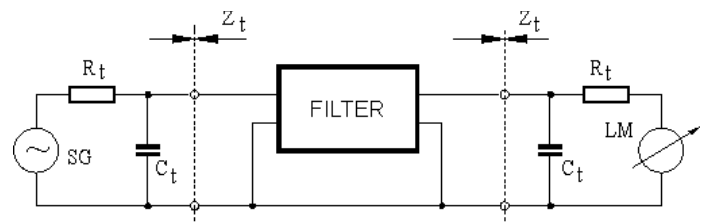
2. Characteristics MCF 21.4-15/08



Dimensions [mm] Case KV 3



Measurement Circuit



edited	27.12.2012	P. Seidl
--------	------------	----------