

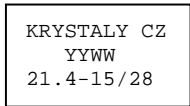


SPECIFICATION FOR CRYSTAL FILTER
MCF 21.4-15/28

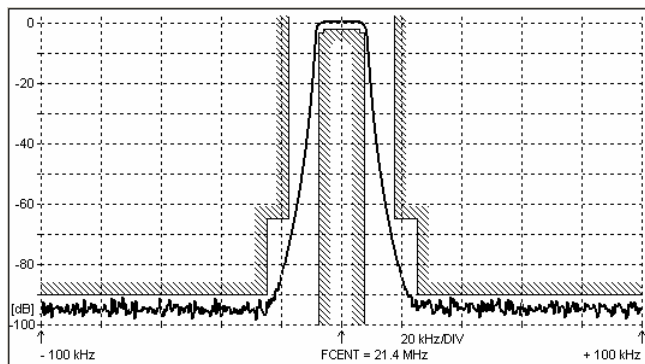
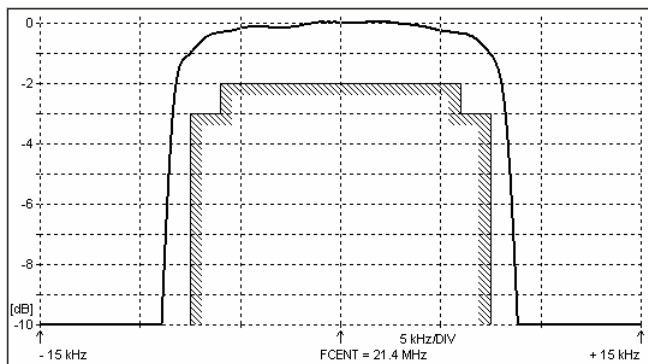
Number: 92 260
Drawing: 61 9533

1. Electric values

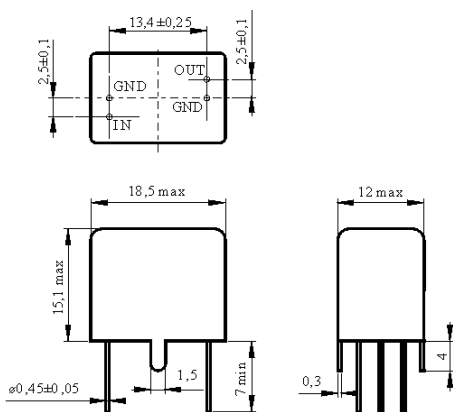
1.0 Number of poles :	8
1.1 Nominal centre frequency f_{nom} :	21.4 MHz
1.2 Bandwidth between 3 dB frequencies :	$\geq \pm 7.5$ kHz
1.3 Ripple at $f_{nom} \pm 6.0$ kHz :	≤ 2.0 dB
1.4 Insertion loss :	≤ 3.0 dB
1.5 Stop band $f_{nom} \pm 17.5$ kHz :	≥ 65 dB
$f_{nom} \pm 25 \dots \pm 300$ kHz :	≥ 90 dB
1.6 Terminating impedance (input and output) :	1600 Ohm // 1.5 pF
1.7 Operating temperature range :	-25°C to +70°C
1.8 Case :	KV 5 (18.5 x 12.0 x 15.1 mm)
1.9 Marking on the case :	YY = year WW = week



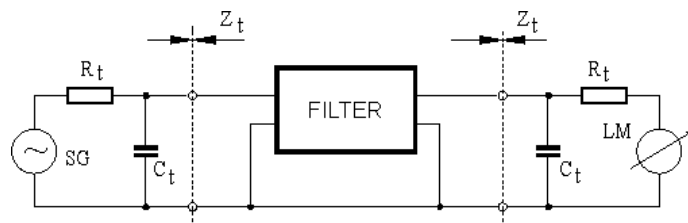
2. Characteristics MCF 21.4-15/28



Dimensions [mm]
Case KV 5



Measurement Circuit



edited 23.08.2012 P. Seidl