



SPECIFICATION FOR CRYSTAL FILTER
MCF 21.4-18/10

Number: 91 798
Drawing: 61 9583

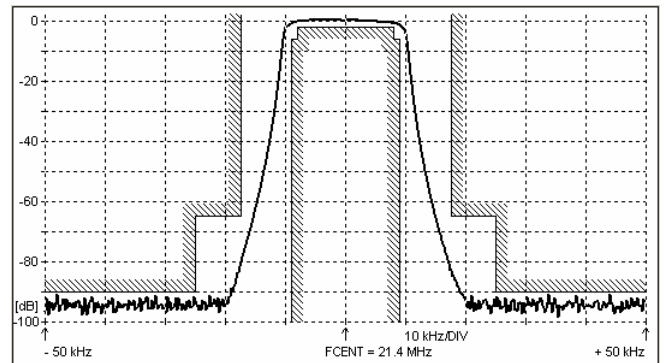
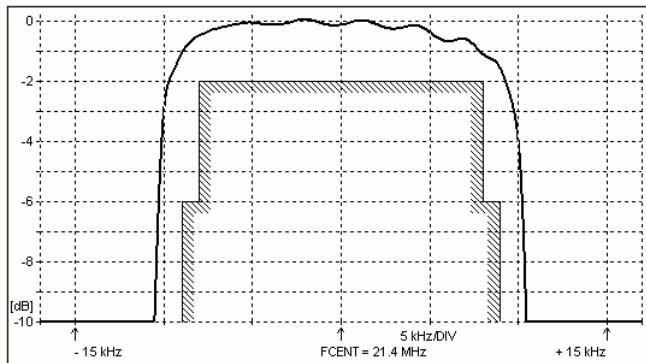
1. Electric values

- 1.0 Number of poles : 10
- 1.1 Nominal centre frequency f_{nom} : 21.4 MHz
- 1.2 Frequency tolerance : ± 400 Hz
- 1.3 Bandwidth between 6 dB frequencies : $\geq \pm 9.0$ kHz
- 1.4 Ripple at $f_{nom} \pm 8.0$ kHz : ≤ 2.0 dB
- 1.5 Insertion loss : ≤ 3.0 dB
- 1.6 Stop band $f_{nom} \pm 17.5$ kHz : ≥ 65 dB
 $f_{nom} \pm 25$ kHz : ≥ 90 dB
- 1.7 Ripple-gradient per kHz $f_{nom} \pm 7.0$ kHz : ≤ 0.5 dB
- 1.8 Terminating impedance (input and output) : 1300 Ohm // 2.0 pF
- 1.9 Operating temperature range : -40°C až +85°C
- 1.10 Case : KV 3 (14 x 8.7 x 11.5 mm)
- 1.11 Marking on the case :

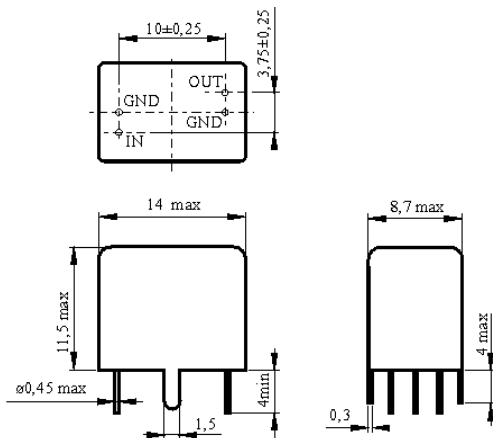
KRYSTALY CZ
YYWW
21.4-18/10

YY = year
WW = week

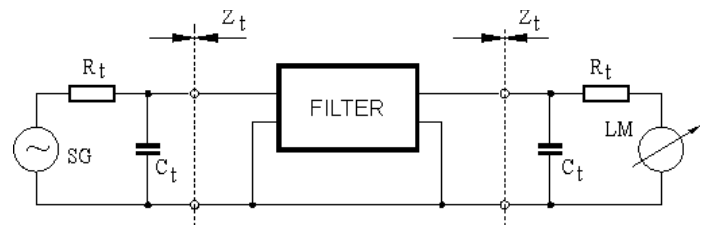
2. Characteristics MCF 21.4-18/10



Dimensions [mm]
Case KV 3



Measurement Circuit



edited	19.07.2011	P. Seidl
--------	------------	----------