

# SPECIFICATION FOR CRYSTAL FILTER MCF 21.4-23/06

Number: 92 041  
Drawing: 61 9578

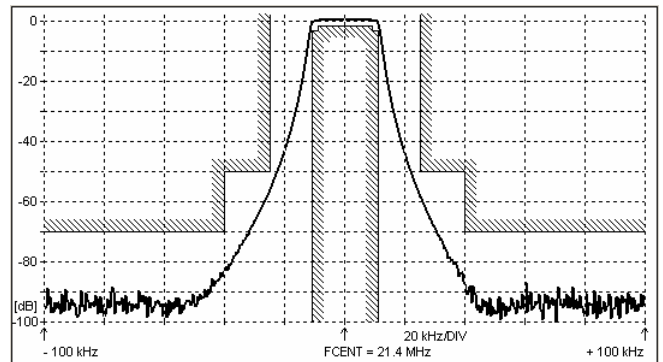
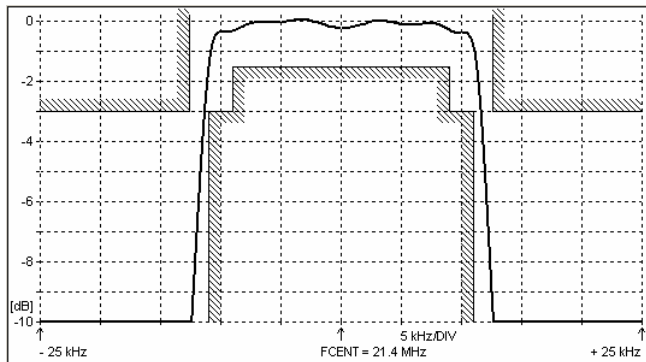
## 1. Electric values

- 1.0 Number of poles : 6
- 1.1 Nominal centre frequency  $f_{nom}$  : 21.4 MHz
- 1.2 Nominal bandwidth between 3 dB frequencies : 23 kHz
- 1.3 Tolerance of bandwidth between 3 dB frequencies :  $f_{nom} \pm 11.0 \dots \pm 12.6$  kHz
- 1.4 Ripple at  $f_{nom} \pm 9.0$  kHz :  $\leq 1.5$  dB
- 1.5 Insertion loss :  $\leq 3.0$  dB
- 1.6 Stop band  $f_{nom} \pm 25$  kHz :  $\geq 50$  dB  
 $f_{nom} \pm 40$  kHz  $\dots \pm 1.0$  MHz :  $\geq 70$  dB
- 1.7 Terminating impedance ( input and output ) : 1500 Ohm // 1.0 pF
- 1.8 Operating temperature range :  $-25^{\circ}\text{C}$  až  $+70^{\circ}\text{C}$
- 1.9 Case : KF 13 (25.1 x 14.1 x 10.5 mm)
- 1.10 Marking on the case :

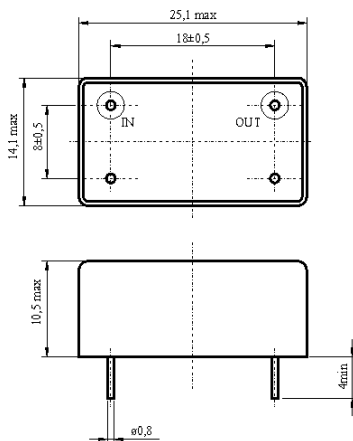
KRYSTALY CZ
YYWW
21.4-23/06

YY = year  
WW = week

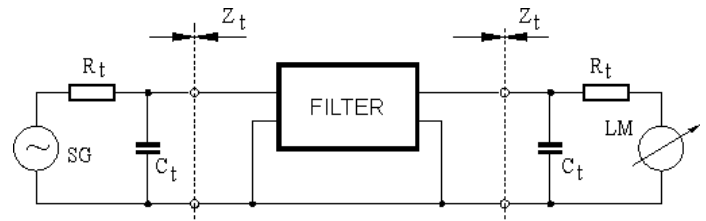
## 2. Characteristics MCF 21.4-23/06



## Dimensions [mm] Case KF 13



## Measurement Circuit



edited	08.08.2011	P. Seidl
--------	------------	----------