



SPECIFICATION FOR CRYSTAL FILTER MCF 21.4-24/11

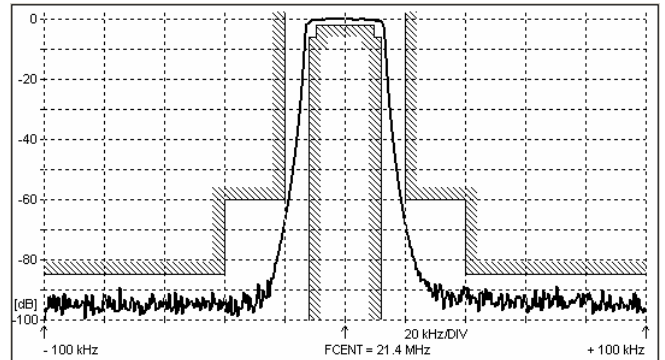
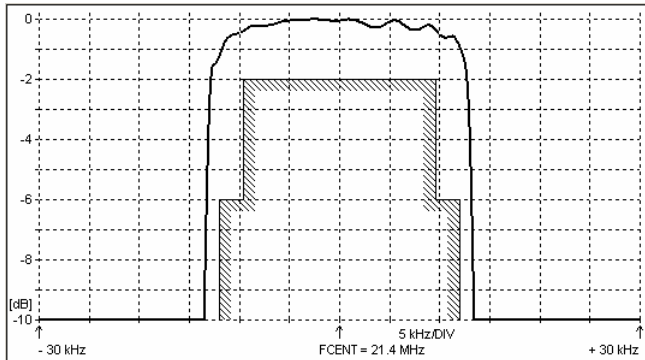
Number: 92 432
Drawing: 71 0068

1. Electric values

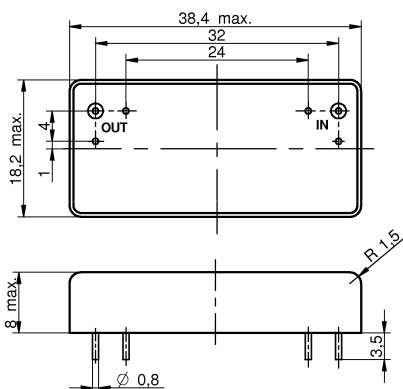
1.0 Number of poles :	10
1.1 Nominal centre frequency f_{nom} :	21.4 MHz
1.2 Bandwidth between 6 dB frequencies :	$\geq \pm 12$ kHz
1.3 Ripple at $f_{nom} \pm 9.6$ kHz :	≤ 2.0 dB
1.4 Insertion loss :	≤ 4.0 dB
1.5 Stop band $f_{nom} \pm 20$ kHz :	≥ 60 dB
$f_{nom} \pm 40 \dots \pm 5$ MHz :	≥ 85 dB (except spurious)
1.6 Terminating impedance (input and output) :	50 Ohm // 0 pF
1.7 Operating temperature range :	-40°C to +80°C
1.8 Case :	KF 17.8 (38.4 x 18.2 x 8.0 mm)
1.9 Marking on the case :	YY = year WW = week

KRYSTALY HK YYWW 21.4-24/11

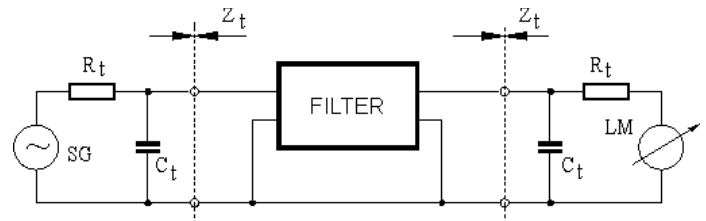
2. Characteristics MCF 21.4-24/11



Dimensions [mm] Case KF-17.8



Measurement Circuit



edited	03.03.2017	RD Krystaly
--------	------------	-------------