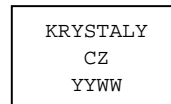
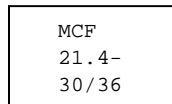
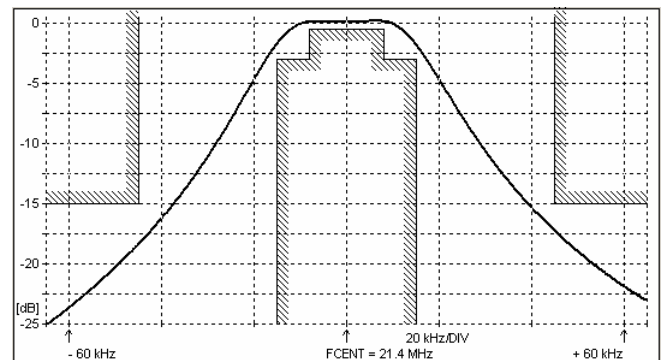
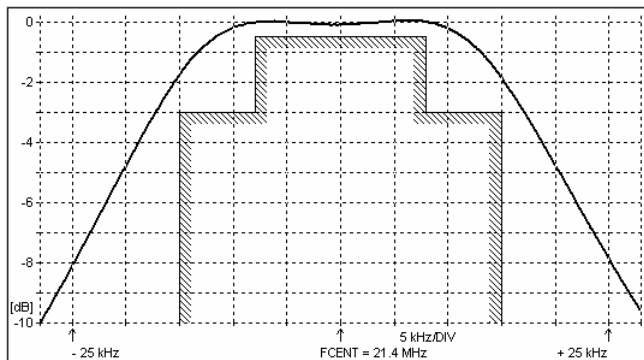
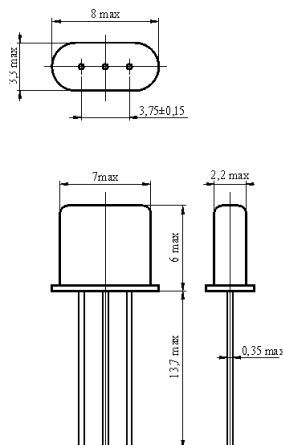
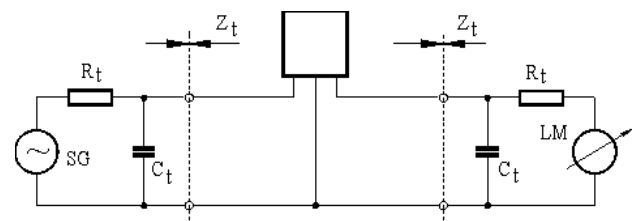


**SPECIFICATION FOR CRYSTAL FILTER**  
**MCF 21.4-30/36**Number: 91 874  
Drawing: 61 9571**1. Electric values**

1.0 Number of poles :	2
1.1 Nominal centre frequency $f_{nom}$ :	21.4 MHz
1.2 Bandwidth between 3 dB frequencies :	$\geq \pm 15$ kHz
1.3 Ripple at $f_{nom} \pm 8.0$ kHz :	$\leq 0.5$ dB
1.4 Insertion loss :	$\leq 1.5$ dB
1.5 Stop band: $f_{nom} \pm 45$ kHz :	$\geq 15$ dB
$f_{nom} + 350 \dots + 1000$ kHz :	$\geq 35$ dB (except spurious)
$f_{nom} - 300 \dots - 1000$ kHz :	$\geq 45$ dB
1.6 Terminating impedance ( input and output ) :	1500 Ohm // -0.5 pF
1.7 Operating temperature range :	-20°C až +70°C
1.8 Case :	UM-5
1.9 Marking on the case :	YY = year WW = week

**2. Characteristics MCF 21.4-30/36****Dimensions [mm]**  
**Case UM-5****Measurement Circuit**

edited 30.06.2011 P. Seidl