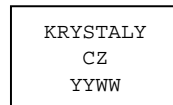
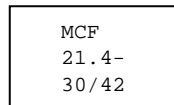
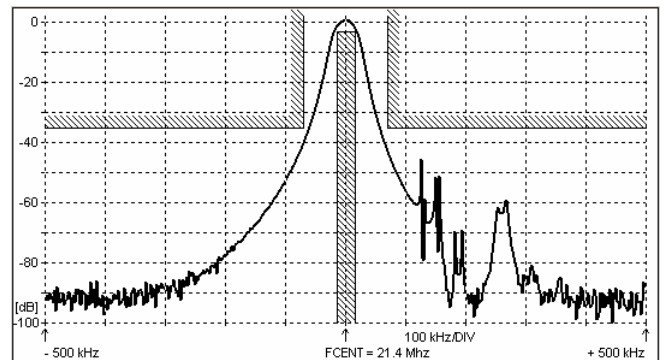
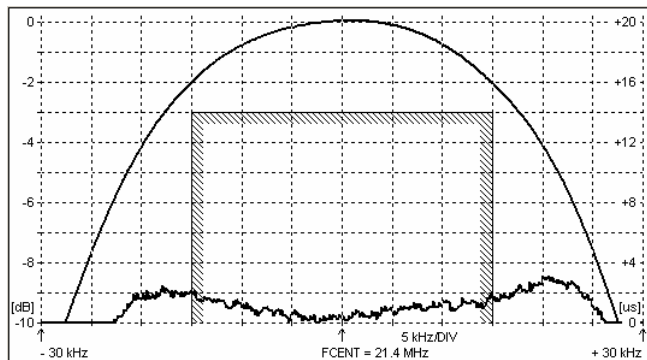
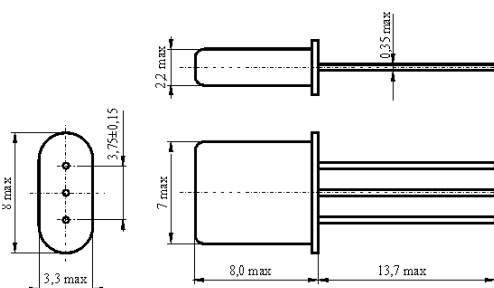
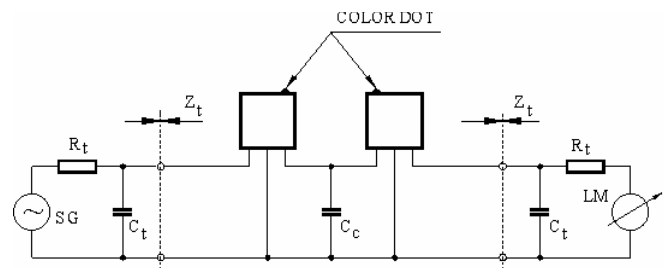


**SPECIFICATION FOR CRYSTAL FILTER**
MCF 21.4-30/42Number: 91 916
Drawing: 61 9574**1. Electric values**

1.0 Number of poles :	4
1.1 Nominal centre frequency f_{nom} :	21.4 MHz
1.2 Bandwidth between 3 dB frequencies :	$\geq \pm 15$ kHz
1.3 Group delay distortion $f_{nom} \pm 15$ kHz :	≤ 4.0 μ s
1.4 Insertion loss :	≤ 3.0 dB
1.5 Stop band $f_{nom} \pm 70$ kHz :	≥ 35 dB
1.6 Terminating impedance (input and output) :	5000 Ohm // -0.8 pF
Coupling capacitance :	2.0 pF
1.7 Operating temperature range :	-20°C až +70°C
1.8 Case :	2 x UM-1
1.9 Marking on the case :	YY = year WW = week

**2. Characteristics MCF 21.4-30/42****Dimensions [mm]**
Case UM-1**Measurement Circuit**

edited 08.07.2011 P. Seidl