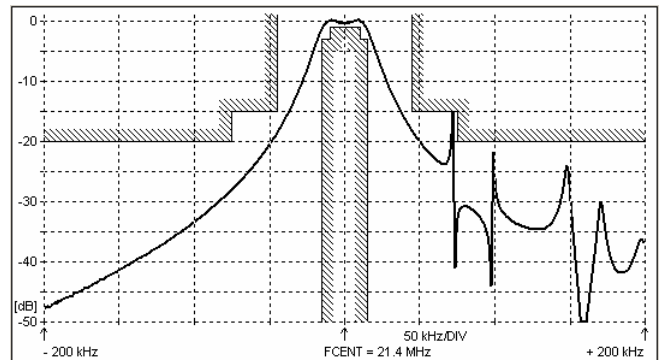
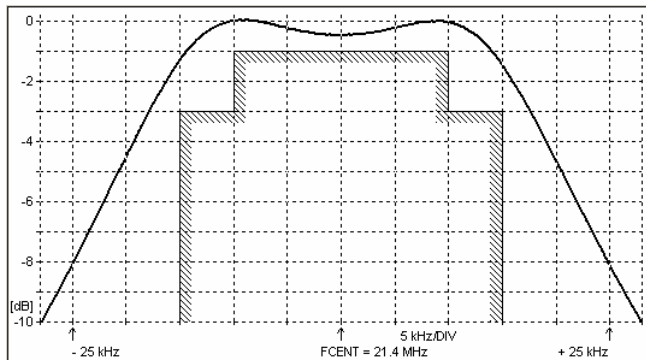
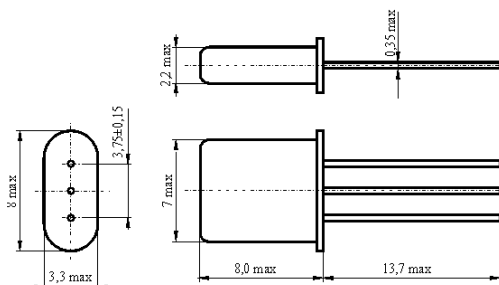
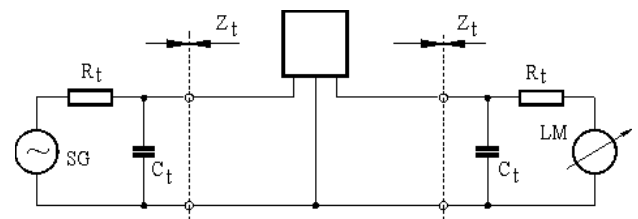
**SPECIFICATION FOR CRYSTAL FILTER  
MCF 21.4-30A**Number: 91 786  
Drawing: 61 9570**1. Electric values**

1.0 Number of poles :	2
1.1 Nominal centre frequency $f_{nom}$ :	21.4 MHz
1.2 Bandwidth between 3 dB frequencies :	$\geq \pm 15$ kHz
1.3 Ripple at $f_{nom} \pm 10$ kHz :	$\leq 1.0$ dB
1.4 Insertion loss :	$\leq 1.5$ dB
1.5 Stop band $f_{nom} \pm 45$ kHz :	$\geq 15$ dB
$f_{nom} \pm 75$ kHz :	$\geq 20$ dB
$f_{nom} \pm 300 \dots \pm 1000$ kHz :	$\geq 35$ dB
1.6 Spurious :	$\leq 8$ dB
1.7 Terminating impedance ( input and output ) :	1500 Ohm // 1.0 pF
1.8 Operating temperature range :	-40°C až +85°C
1.9 Case :	UM-1
1.10 Marking on the case :	YY = year WW = week

KRYSTALY 21.4-30A YYWW
------------------------------

**2. Characteristics MCF 21.4-30A****Dimensions [mm]  
Case UM-1****Measurement Circuit**

edited 18.07.2011 P. Seidl