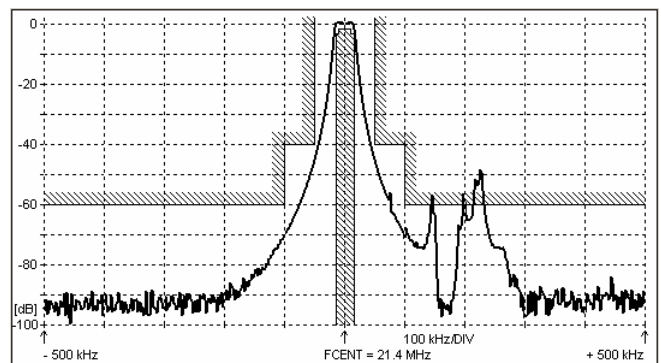
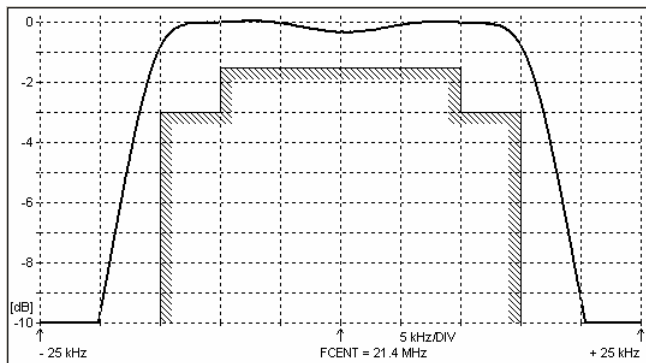
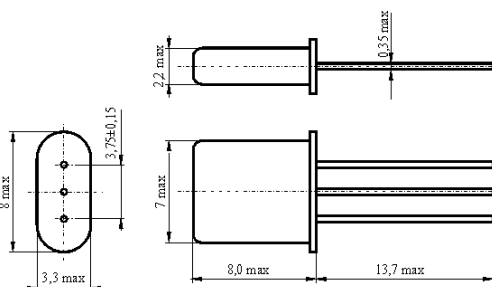
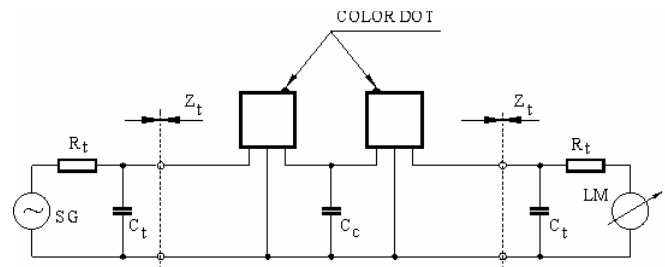
**SPECIFICATION FOR CRYSTAL FILTER**  
**MCF 21.4-30B**Number: 91 760  
Drawing: 61 9574**1. Electric values**

1.0 Number of poles :	4
1.1 Nominal centre frequency $f_{nom}$ :	21.4 MHz
1.2 Bandwidth between 3 dB frequencies :	$\geq \pm 15$ kHz
1.3 Ripple at $f_{nom} \pm 10.0$ kHz :	$\leq 1.5$ dB
1.4 Insertion loss :	$\leq 2.0$ dB
1.5 Stop band: $f_{nom} \pm 50$ kHz :	$\geq 40$ dB
$f_{nom} \pm 100 \dots \pm 1000$ kHz :	$\geq 60$ dB
1.6 Spurious :	$\geq 25$ dB
1.7 Terminating impedance ( input and output ) :	2200 Ohm // 0.5 pF
Coupling capacitance :	3.5 pF
1.8 Operating temperature range :	-25°C to +70°C
1.9 Case :	2 x UM-1
1.10 Marking on the case :	YY = year WW = week

KRYSTALY 21.4-30B YYWW
------------------------------

**2. Characteristics MCF 21.4-30B****Dimensions [mm]**  
**Case UM-1****Measurement Circuit**

edited 23.02.2011 P. Seidl