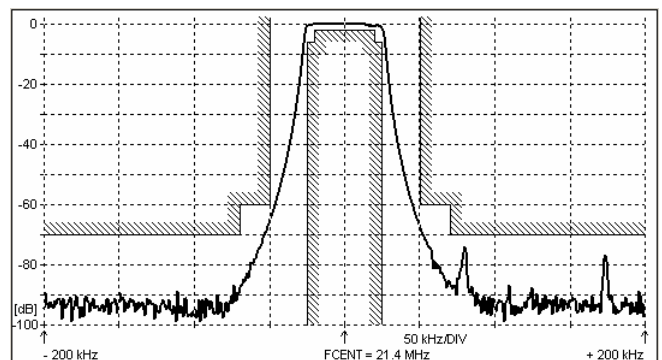
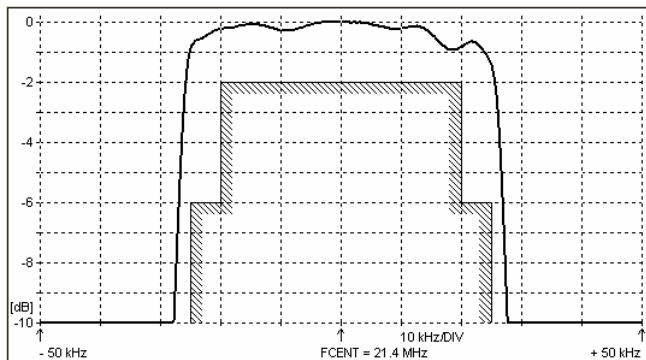
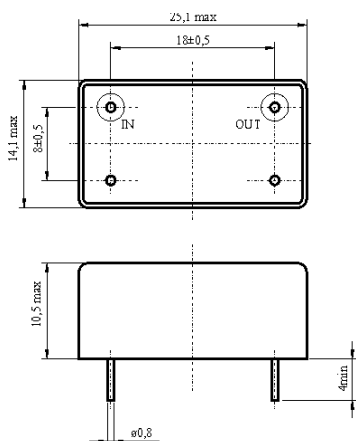
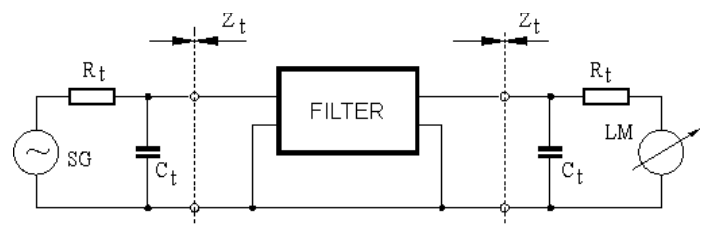


**SPECIFICATION FOR CRYSTAL FILTER**
MCF 21.4-50/08Number: 92 264
Drawing: 61 9578**1. Electric values**

1.0 Number of poles :	8
1.1 Nominal centre frequency f_{nom} :	21.4 MHz
1.2 Bandwidth between 6 dB frequencies :	$\geq \pm 25$ kHz
1.3 Ripple at $f_{nom} \pm 20.0$ kHz :	≤ 2.0 dB
1.4 Insertion loss :	≤ 4.0 dB
1.5 Stop band $f_{nom} \pm 50$ kHz :	≥ 60 dB
$f_{nom} \pm 70$ kHz :	≥ 70 dB
1.6 Ultimate attenuation :	≥ 70 dB (except spurious)
1.7 Terminating impedance (input and output) :	50 Ohm // 0 pF
1.8 Operating temperature range :	-40°C to +80°C
1.9 Case :	KF 13 (25.1 x 14.1 x 10.5 mm)
1.10 Marking on the case :	YY = year WW = week

KRYSTALY CZ YYWW 21.4-50/08

2. Characteristics MCF 21.4-50/08**Dimensions [mm]**
Case KF 13**Measurement Circuit**

edited	20.09.2012	P. Seidl
--------	------------	----------