

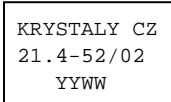


SPECIFICATION FOR CRYSTAL FILTER
MCF 21.4-52/02

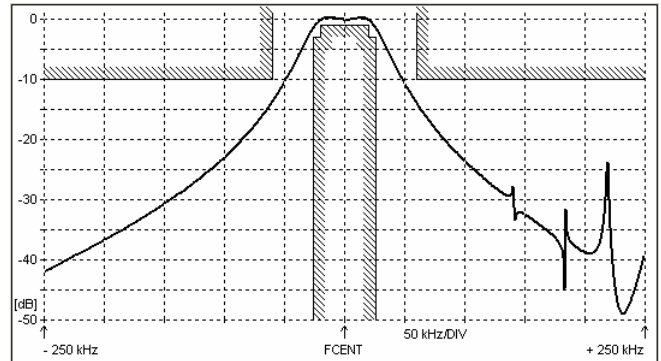
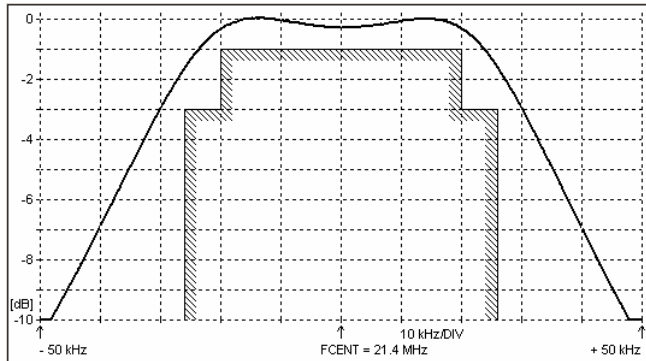
Number: 91 761
Drawing: 61 9569

1. Electric values

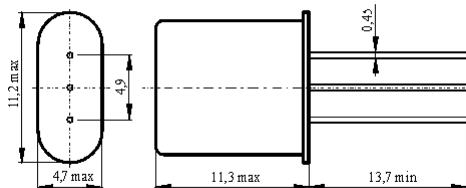
1.0 Number of poles :	2
1.1 Nominal centre frequency f_{nom} :	21.4 MHz
1.2 Bandwidth between 3 dB frequencies :	$\geq \pm 26$ kHz
1.3 Ripple in band $f_{nom} \pm 20$ kHz :	≤ 1.0 dB
1.4 Insertion loss :	≤ 1.0 dB
1.5 Stop band $f_{nom} \pm 60$ kHz :	≥ 10 dB
$f_{nom} + 700$ kHz + 10 MHz :	≥ 40 dB
$f_{nom} - 300$ kHz - 10 MHz :	≥ 40 dB
1.6 Spurious $f_{nom} \pm 70$ kHz :	no responses
- (responses with 20-dB Bandwidth > 10 kHz)	
$f_{nom} \pm 160$ kHz ± 250 kHz :	≥ 15 dB
$f_{nom} \pm 250$ kHz ± 10 MHz :	≥ 20 dB
- (responses with 20-dB Bandwidth < 10 kHz)	
$f_{nom} \pm 70$ kHz ± 10 MHz :	≥ 0 dB
1.7 Terminating impedance (input and output) :	3600 Ohm // -1.8 pF
1.8 Level nonlinearity (range -40 dBm to 0 dBm) :	≤ 0.3 dB
1.9 Operating temperature range :	-20°C až +70°C
1.10 Case :	HC-49U / 3pin
1.11 Marking on the case :	YY = year WW = week



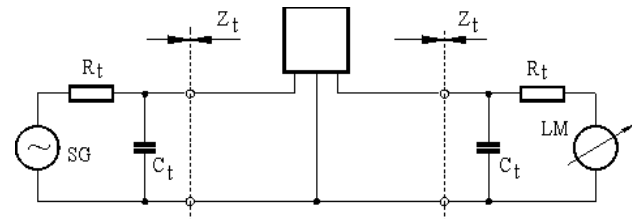
2. Characteristics MCF 21.4-52/02



Dimensions [mm]
Case HC-49U / 3 pin



Measurement Circuit



edited 13.07.2011 P. Seidl