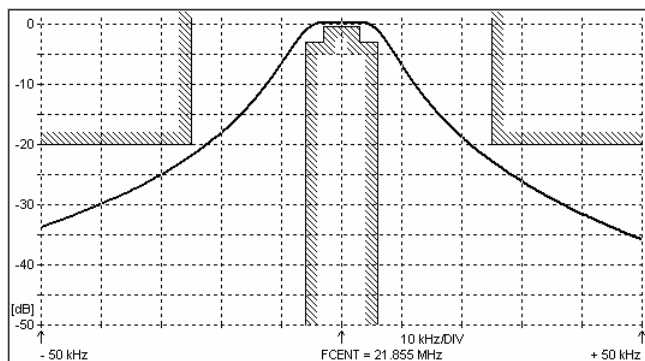
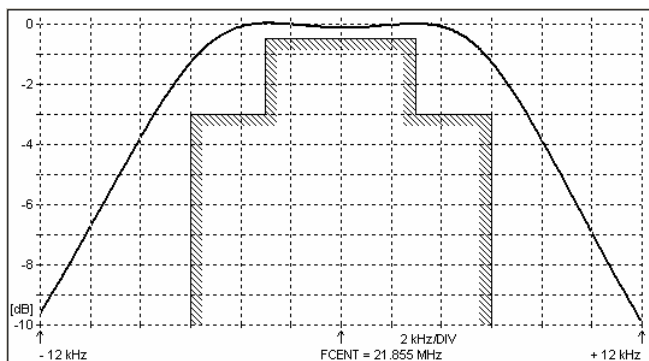
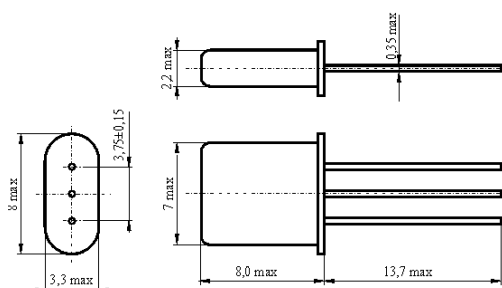
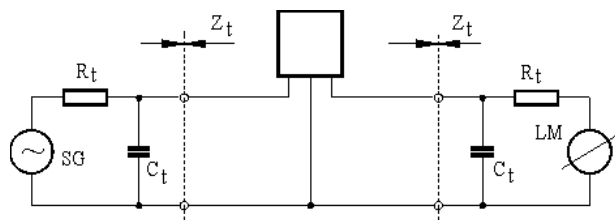
**SPECIFICATION FOR CRYSTAL FILTER**
MCF 21.855-12ANumber: 91 787
Drawing: 61 9570**1. Electric values**

1.0 Number of poles :	2
1.1 Nominal centre frequency f_{nom} :	21.855 MHz
1.2 Bandwidth between 3 dB frequencies :	$\geq \pm 6.0$ kHz
1.3 Ripple at $f_{nom} \pm 3.0$ kHz :	≤ 0.5 dB
1.4 Insertion loss :	≤ 1.5 dB
1.5 Stop band: $f_{nom} \pm 25$ kHz :	≥ 20 dB
$f_{nom} + 350 \dots + 1000$ kHz :	≥ 35 dB
$f_{nom} - 200 \dots - 1000$ kHz :	≥ 50 dB
1.6 Terminating impedance (input and output) :	910 Ohm // 3.0 pF
1.7 Operating temperature range :	-20°C až +70°C
1.8 Case :	UM-1
1.9 Marking on the case :	YY = year WW = week

MCF 21.855 -12A

KRYSTALY CZ YYWW

2. Characteristics MCF 21.855-12A**Dimensions [mm]**
Case UM-1**Measurement Circuit**

edited	27.06.2011	P. Seidl
--------	------------	----------