

SPECIFICATION FOR CRYSTAL FILTER
MCF 23.0-45/18

Number: 92 400
Drawing: 61 9580

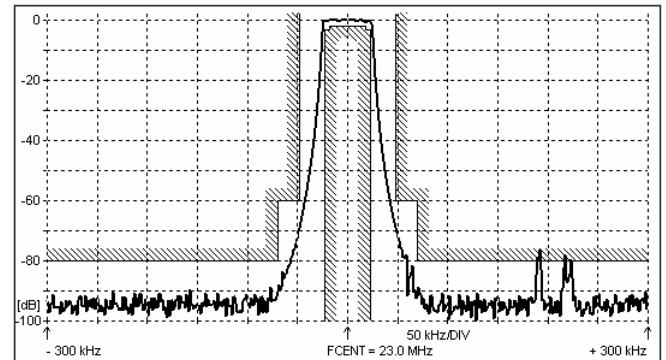
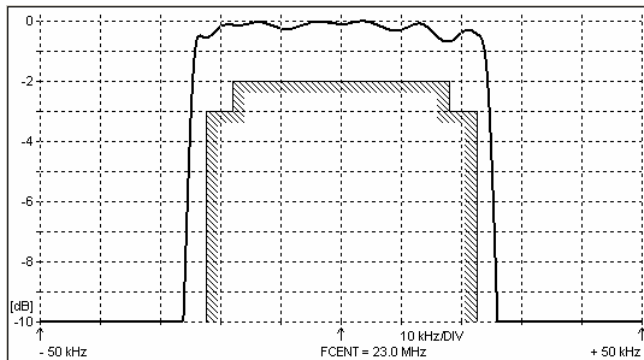
1. Electric values

- 1.0 Number of poles : 8
- 1.1 Nominal centre frequency f_{nom} : 23.0 MHz
- 1.2 Bandwidth between 3 dB frequencies : $\geq \pm 22.5$ kHz
- 1.3 Ripple at $f_{nom} \pm 18$ kHz : ≤ 2.0 dB
- 1.4 Insertion loss : ≤ 5.0 dB
- 1.5 Stop band $f_{nom} \pm 48$ kHz : ≥ 60 dB
- $f_{nom} \pm 70$ kHz ± 1.0 MHz : ≥ 80 dB (except spurious)
- 1.6 Spurious responses : ≥ 60 dB
- 1.7 Terminating impedance (input and output) : 50 Ohm // 0 pF
- 1.8 Operating temperature range : -55°C to +85°C
- 1.9 Case : KF 13 (25.1 x 14.1 x 10.0 mm)
- 1.10 Marking on the case :

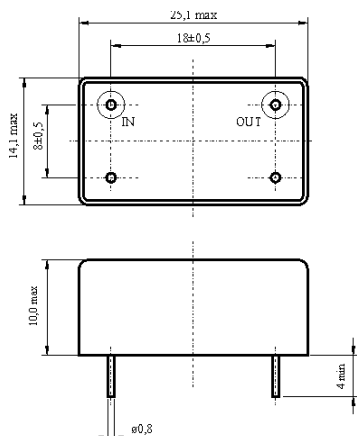
KRYSTALY HK YYWW
MCF 23.0-45/18

YY = year
WW = week

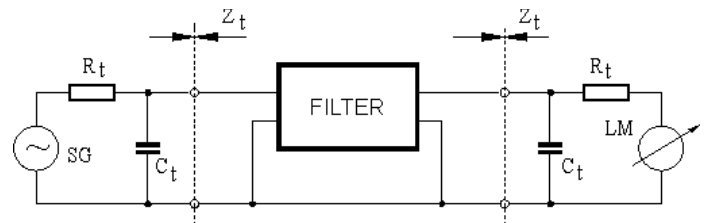
2. Characteristics MCF 23.0-45/18



Dimensions [mm]
Case KF-13



Measurement Circuit



edited	15.08.2016	RD Krystaly
--------	------------	-------------