

# SPECIFICATION FOR CRYSTAL FILTER MCF 24.0-6.0/06

Number: 92 286  
Drawing: 61 9578

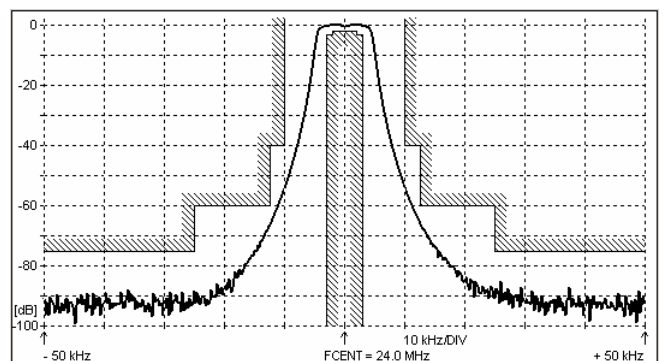
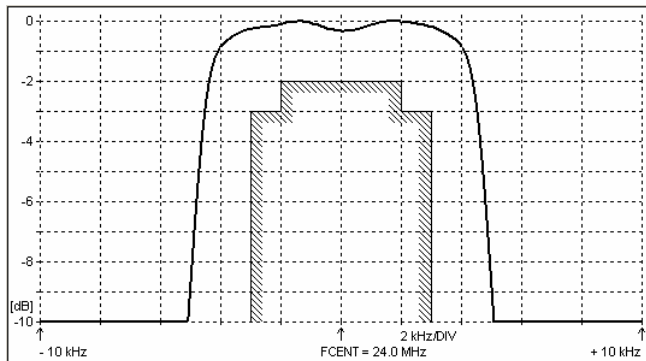
## 1. Electric values

- 1.0 Number of poles : 6
- 1.1 Nominal centre frequency  $f_{nom}$  : 24.0 MHz
- 1.2 Bandwidth between 3 dB frequencies :  $\geq \pm 3.0$  kHz
- 1.3 Ripple at  $f_{nom} \pm 2.0$  kHz :  $\leq 2.0$  dB
- 1.4 Insertion loss :  $\leq 3.5$  dB
- 1.5 Stop band  $f_{nom} \pm 10.0$  kHz :  $\geq 40$  dB
- $f_{nom} \pm 12.5$  kHz :  $\geq 60$  dB
- $f_{nom} \pm 25 \dots 500$  kHz :  $\geq 75$  dB
- 1.6 Nominal / Maximal input power level : 0 dBm / +15 dBm
- 1.7 Terminating impedance ( input and output ) : 50 Ohm // 0 pF
- 1.8 Operating temperature range : -20°C to +70°C
- 1.9 Case : KF 13 (25.1 x 14.1 x 10.5 mm)
- 1.10 Marking on the case :

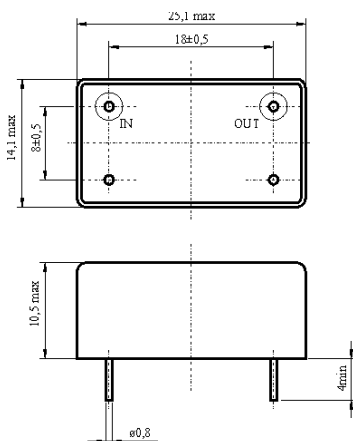
KRYSTALY CZ
YYWW
24.0-6.0/06

YY = year  
WW = week

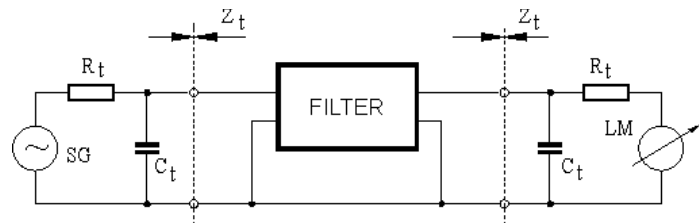
## 2. Characteristics MCF 24.0-6.0/06



## Dimensions [mm] Case KF 13



## Measurement Circuit



edited	09.07.2013	P. Seidl
--------	------------	----------