

SPECIFICATION FOR CRYSTAL FILTER MCF 28.190-15/06

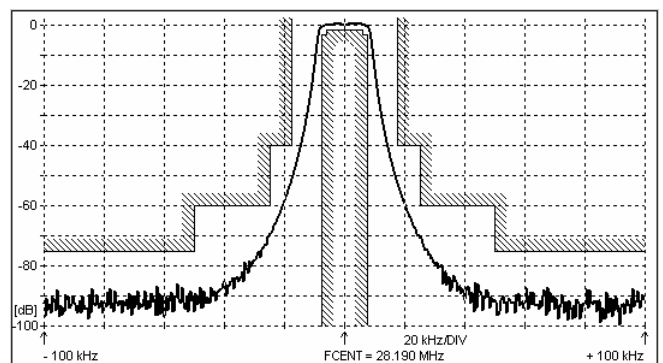
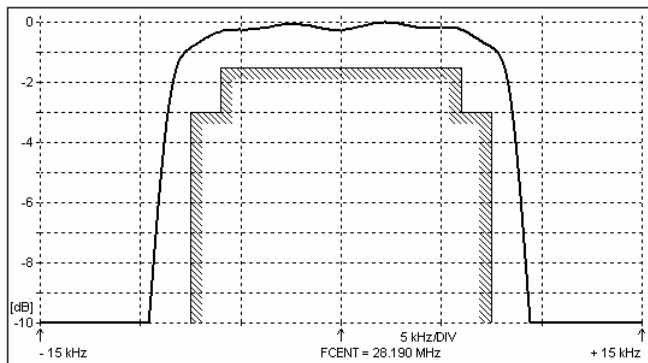
Number: 92 272
Drawing: 61 9578

1. Electric values

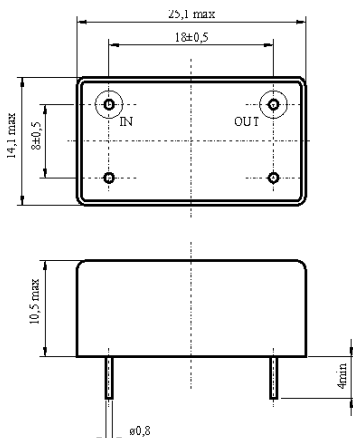
- 1.0 Number of poles : 6
- 1.1 Nominal centre frequency f_{nom} : 28.190 MHz
- 1.2 Bandwidth between 3 dB frequencies : $\geq \pm 7.5$ kHz
- 1.3 Ripple at $f_{nom} \pm 6.0$ kHz : ≤ 1.5 dB
- 1.4 Insertion loss : ≤ 4.0 dB
- 1.5 Stop band $f_{nom} \pm 17.5$ kHz : ≥ 40 dB
- $f_{nom} \pm 25$ kHz : ≥ 60 dB
- $f_{nom} \pm 50 \dots 500$ kHz : ≥ 75 dB (except spurious)
- 1.6 Terminating impedance (input and output) : 50 Ohm // 0 pF
- 1.7 Operating temperature range : -25°C to +70°C
- 1.8 Case : KF 13 (25.1 x 14.1 x 10.5 mm)
- 1.9 Marking on the case :

KRYSTALY CZ
YYWW
28.190-15/06

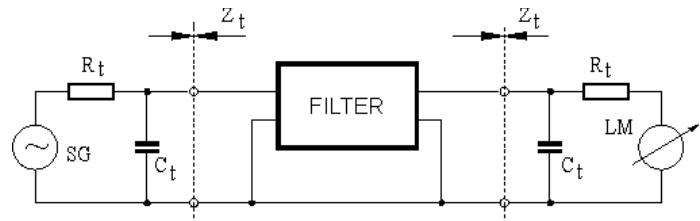
2. Characteristics MCF 28.190-15/06



Dimensions [mm] Case KF 13



Measurement Circuit



edited	04.02.2013	P. Seidl
--------	------------	----------