

SPECIFICATION FOR CRYSTAL FILTER MCF 34.3625-30/08

Number: 92 330
Drawing: 61 9578

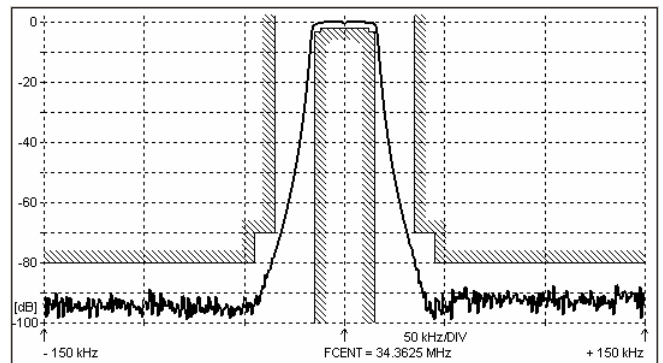
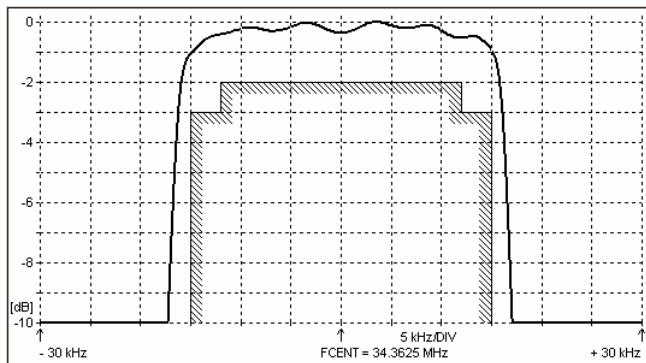
1. Electric values

- 1.0 Number of poles : 8
- 1.1 Centre frequency f_{nom} : 34.3625 MHz \pm 1.2 kHz
- 1.2 Bandwidth between 3 dB frequencies : $\geq \pm 15$ kHz
- 1.3 Ripple at $f_{nom} \pm 12.0$ kHz : ≤ 2.0 dB
- 1.4 Insertion loss : ≤ 5.0 dB
- 1.5 Stop band $f_{nom} \pm 35$ kHz : ≥ 70 dB
- $f_{nom} \pm 45 \dots 1000$ kHz : ≥ 80 dB
- 1.6 Spurious responses $f_{nom} + 45 \dots 500$ kHz : ≥ 70 dB
- 1.7 Outband IM for $f_{nom} \pm 37.5 / \pm 75$ kHz and $P_{in} = -10$ dBm : ≥ 80 dB
- 1.8 Terminating impedance (input and output) : 50 Ohm // 0 pF
- 1.9 Operating temperature range : 0°C to +70°C
- 1.10 Case : KF 13 (25.1 x 14.1 x 10.5 mm)
- 1.11 Marking on the case :

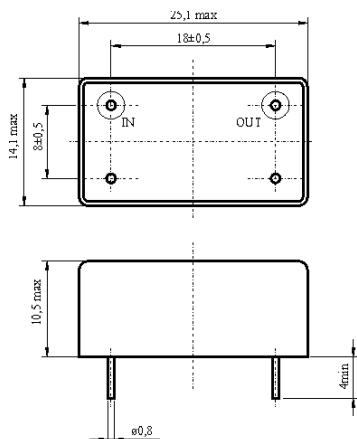
KRYSTALY
YYWW
34.3625-30/08

YY = year
WW = week

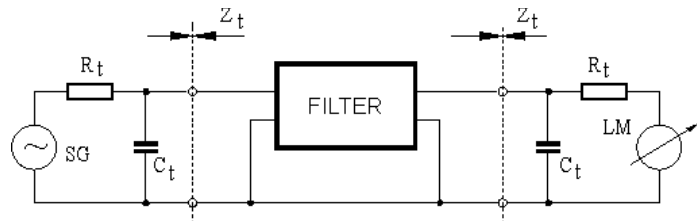
2. Characteristics MCF 34.3625-30/08



Dimensions [mm] Case KF 13



Measurement Circuit



edited	30.06.2014	P. Seidl
--------	------------	----------