

SPECIFICATION FOR CRYSTAL FILTER MCF 37.4-6.0/06

Number: 92 287
Drawing: 61 9578

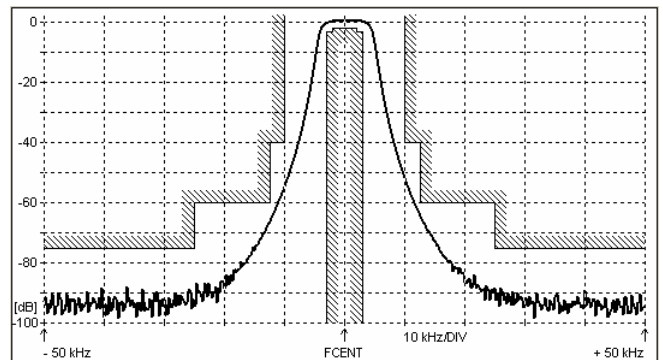
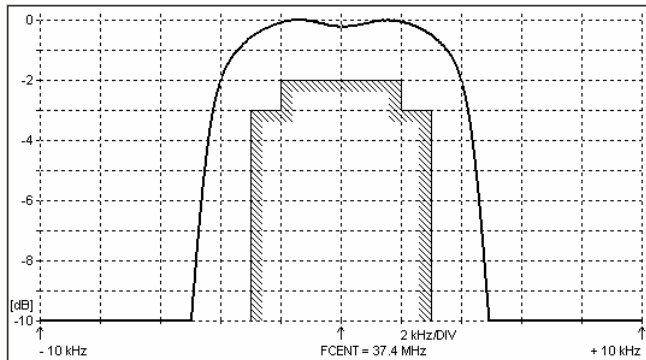
1. Electric values

- 1.0 Number of poles : 6
- 1.1 Nominal centre frequency f_{nom} : 37.4 MHz
- 1.2 Bandwidth between 3 dB frequencies : $\geq \pm 3.0$ kHz
- 1.3 Ripple at $f_{nom} \pm 2.0$ kHz : ≤ 2.0 dB
- 1.4 Insertion loss : ≤ 5.5 dB
- 1.5 Stop band $f_{nom} \pm 10.0$ kHz : ≥ 40 dB
- $f_{nom} \pm 12.5$ kHz : ≥ 60 dB
- $f_{nom} \pm 25 \dots 500$ kHz : ≥ 75 dB
- 1.6 Nominal / Maximal input power level : 0 dBm / +15 dBm
- 1.7 Terminating impedance (input and output) : 50 Ohm // 0 pF
- 1.8 Operating temperature range : -20°C to +70°C
- 1.9 Case : KF 13 (25.1 x 14.1 x 10.5 mm)
- 1.10 Marking on the case :

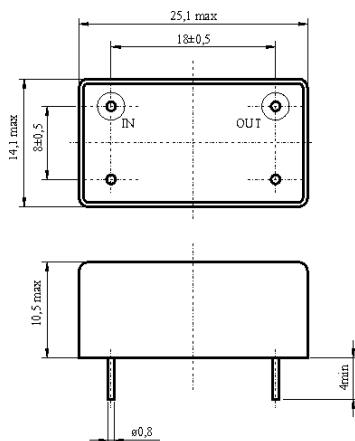
KRYSTALY CZ
YYWW
37.4-6.0/06

YY = year
WW = week

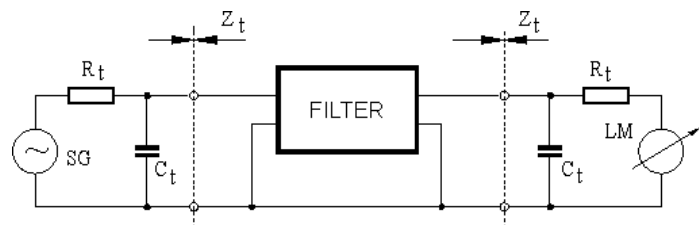
2. Characteristics MCF 37.4-6.0/06



Dimensions [mm] Case KF 13



Measurement Circuit



edited	01.07.2013	P. Seidl
--------	------------	----------