

SPECIFICATION FOR CRYSTAL FILTER
MCF 42.0-10/02

Number: 91 783
Drawing: 61 9570

1. Electric values

- 1.0 Number of poles : 2 (3rd overtone)
- 1.1 Nominal centre frequency f_{nom} : 42.0 MHz
- 1.2 Bandwidth between 3 dB frequencies : $\geq \pm 5.0$ kHz
- 1.3 Ripple at $f_{nom} \pm 3.5$ kHz : ≤ 1.0 dB
- 1.4 Insertion loss : ≤ 3.0 dB
- 1.5 Stop band $f_{nom} \pm 40$ kHz : ≥ 25 dB
- $f_{nom} + 200 \dots +1000$ kHz : ≥ 25 dB
- $f_{nom} - 40 \dots - 1000$ kHz : ≥ 25 dB
- $f_{nom} \pm 1 \dots \pm 10$ MHz : ≥ 50 dB
- 1.6 Spurious responses ($f_{nom} +40 \dots +200$ kHz) : ≥ 3 dB
- 1.7 Terminating impedance (input and output) : 2200 Ohm // -1.0 pF
- 1.8 Operating temperature range : -20°C to +70°C
- 1.9 Case : UM-1

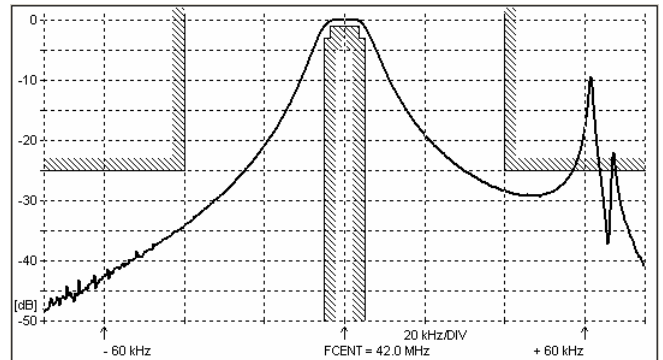
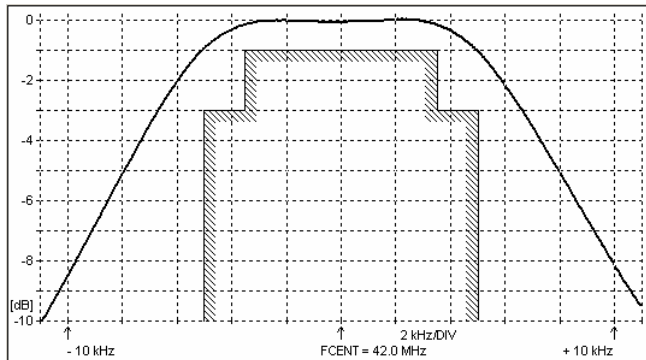
1.10 Marking on the case :

MCF
42.0-
10/02

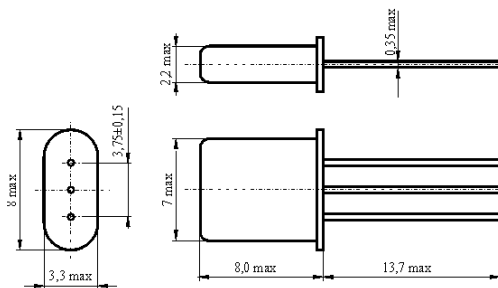
KRYSTALY
CZ
YYWW

YY = year
WW = week

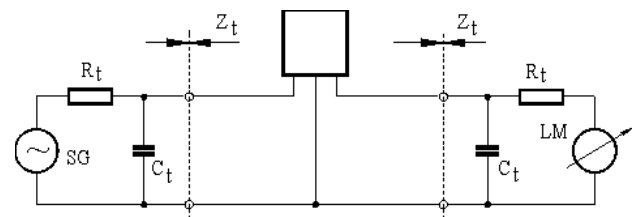
2. Characteristics MCF 42.0-10/02



Dimensions [mm]
Case UM-1



Measurement Circuit



edited	09.02.2012	P. Seidl
--------	------------	----------