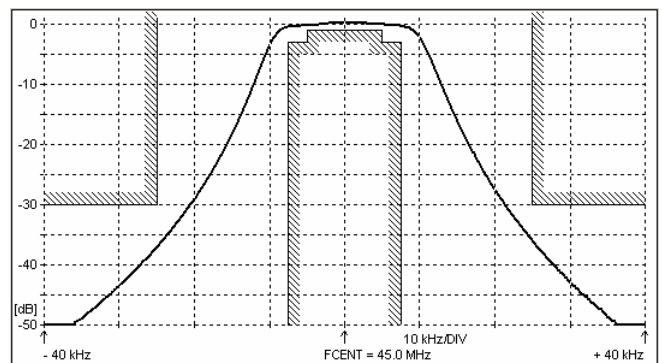
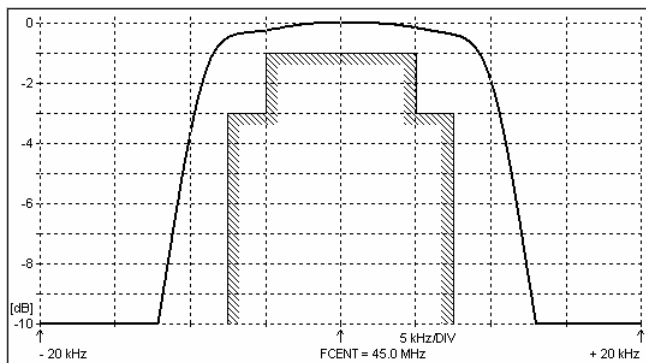
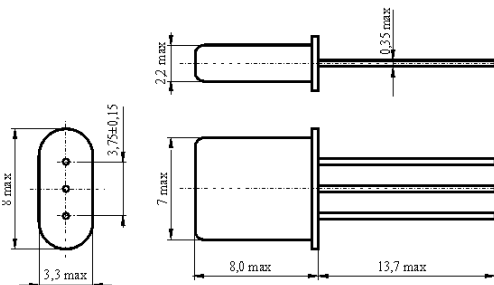
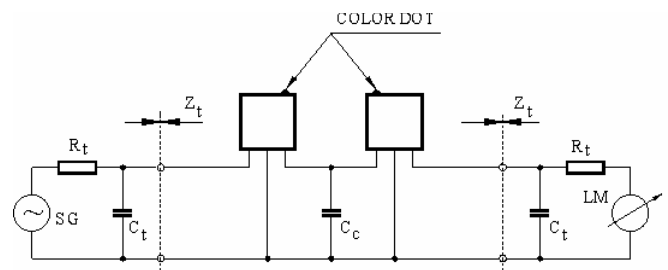


**SPECIFICATION FOR CRYSTAL FILTER**
MCF 45.0-15/04Number: 91 820
Drawing: 61 9574**1. Electric values**

1.0 Number of poles :	4
1.1 Nominal centre frequency f_{nom} :	45.0 MHz
1.2 Bandwidth between 3 dB frequencies :	$\geq \pm 7.5$ kHz
1.3 Ripple at $f_{nom} \pm 5.0$ kHz :	≤ 1.0 dB
1.4 Insertion loss :	≤ 3.0 dB
1.5 Stop band: $f_{nom} \pm 25$ kHz :	≥ 30 dB
$f_{nom} - 910$ kHz :	≥ 90 dB
1.6 Terminating impedance (IN / OUT) :	650 Ohm // 3.0 pF
1.7 Coupling capacitance C_C :	10.0 pF $\pm 10\%$
1.8 Operating temperature range :	-25°C až +70°C
1.9 Case :	2 x UM-1
1.10 Marking on the case :	YY = year WW = week

KRYSTALY CZ 45.0-15/04 YYWW

2. Characteristics MCF 45.0-15/04**Dimensions [mm]**
Case UM-1**Measurement Circuit**

edited	14.02.2011	P. Seidl
--------	------------	----------