

SPECIFICATION FOR CRYSTAL FILTER
MCF 45.0-15BS1

Number: 91 732
Drawing: 62 9529

1. Electric values

- 1.0 Number of poles : 4
- 1.1 Nominal centre frequency f_{nom} : 45.0 MHz
- 1.2 Bandwidth between 3 dB frequencies : $\geq \pm 7.5$ kHz
- 1.3 Ripple at $f_{nom} \pm 6.0$ kHz : ≤ 1.0 dB
- 1.4 Insertion loss : ≤ 3.0 dB
- 1.5 Stop band $f_{nom} \pm 25$ kHz : ≥ 30 dB
- $f_{nom} \pm 100$ kHz : ≥ 70 dB
- $f_{nom} \pm 910$ kHz : ≥ 80 dB
- 1.6 Spurious responses : ≥ 30 dB
- 1.7 Terminating impedance (input and output) : 560 Ohm // 2.5 pF
- Coupling capacitance : 12 pF
- 1.8 Operating temperature range : -25°C to +70°C
- 1.9 Case : 2 x UM-5/SMD

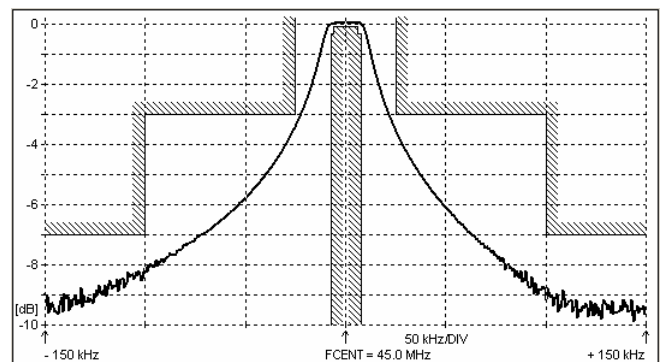
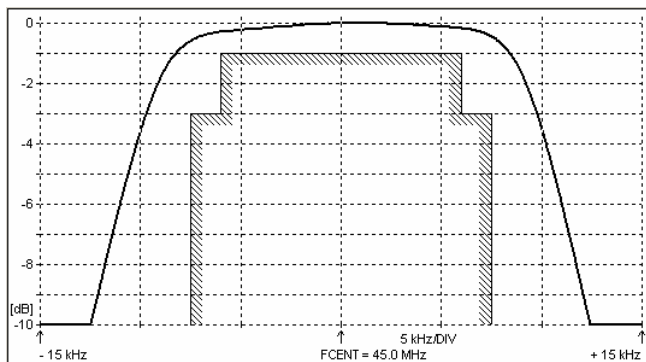
1.10 Marking on the case :

MCF
45.0-
15BS1

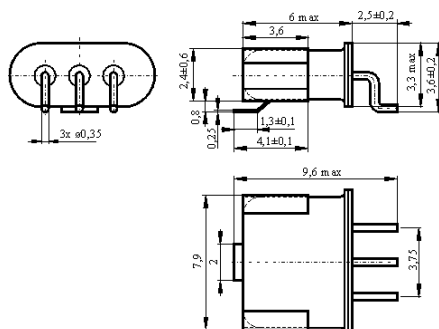
KRYSTALY
CZ
YYWW

YY = year
WW = week

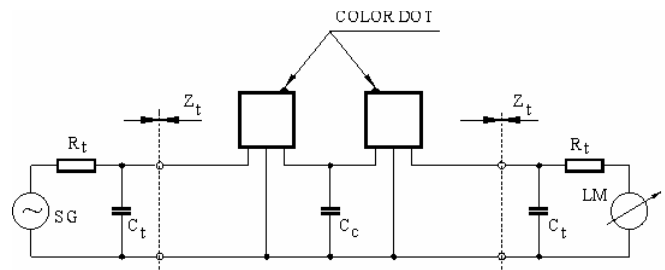
2. Characteristics MCF 45.0-15BS1



Dimensions [mm]
Case UM-5/SMD



Measurement Circuit



edited	06.02.2012	P. Seidl
--------	------------	----------