



SPECIFICATION FOR CRYSTAL FILTER MCF 70.0-15/14

Number: 92 379
Drawing: 61 9578

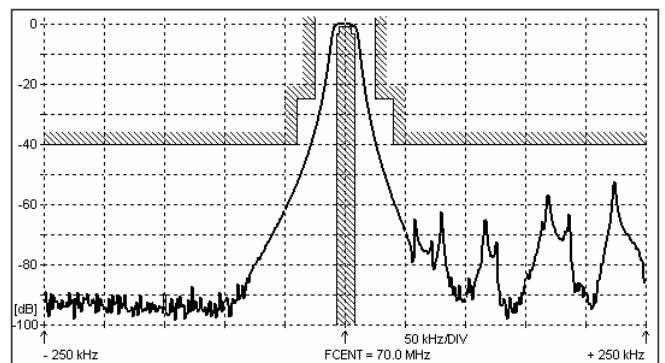
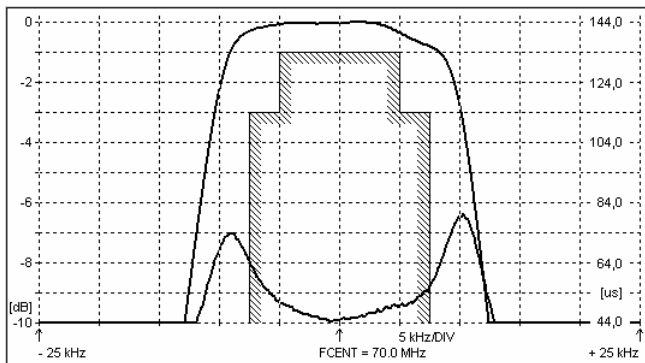
1. Electric values

- 1.0 Number of poles : 4 (3 rd overtone)
- 1.1 Nominal centre frequency f_{nom} : 70.0 MHz
- 1.2 Bandwidth between 3 dB frequencies : $\geq \pm 7.5$ kHz
- 1.3 Ripple at $f_{nom} \pm 5.0$ kHz : ≤ 1.0 dB
- 1.4 Insertion loss : ≤ 4.5 dB
- 1.5 Group delay distortion $f_{nom} \pm 5.0$ kHz : ≤ 15 μ s
- 1.6 Stop band $f_{nom} \pm 25$ kHz : ≥ 25 dB
- $f_{nom} \pm 40 \dots \pm 1000$ kHz : ≥ 40 dB
- $f_{nom} - (910 \pm 10)$ kHz : ≥ 80 dB
- 1.7 Spurious responses : ≥ 30 dB
- 1.8 Terminating impedance (input and output) : 50 Ohm // 0 pF
- 1.9 Operating temperature range : -25°C to +80°C
- 1.10 Case : KF 13 (25.1 x 14.1 x 10.0 mm)
- 1.11 Marking on the case :

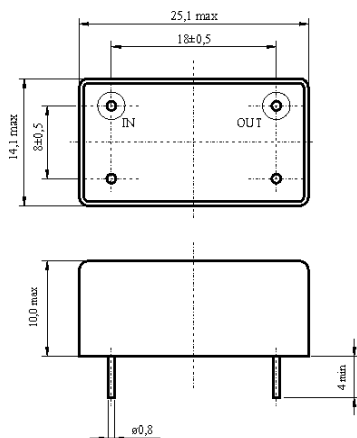
KRYSTALY HK
YYWW
70.0-15/14

YY = year
WW = week

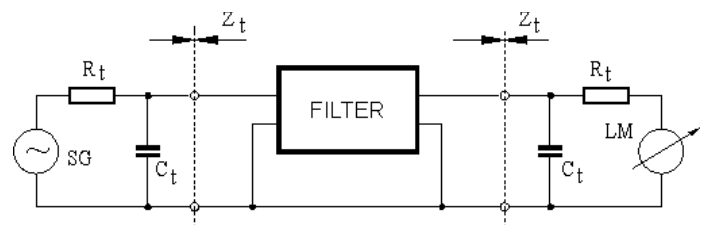
2. Characteristics MCF 70.0-15/14



Dimensions [mm] Case KF 13



Measurement Circuit



edited 29.02.2016 RD Krystaly