

SPECIFICATION FOR CRYSTAL FILTER
MCF 70.0-20/04

Number: 91 855
Drawing: 61 9574

1. Electric values

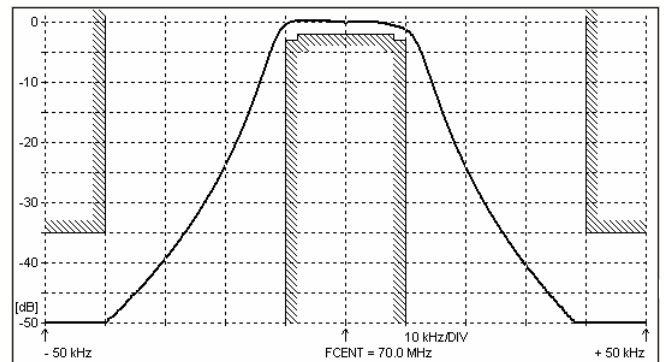
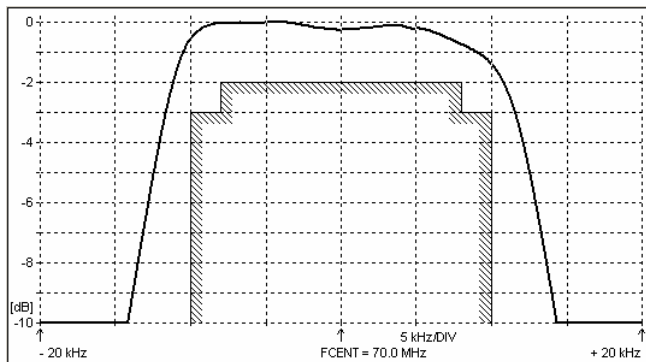
- 1.0 Number of poles : 4 (3 rd overtone)
- 1.1 Nominal centre frequency f_{nom} : 70.0 MHz
- 1.2 Bandwidth between 3 dB frequencies : $\geq \pm 10.0$ kHz
- 1.3 Ripple at $f_{nom} \pm 8.0$ kHz : ≤ 2.0 dB
- 1.4 Insertion loss : ≤ 3.0 dB
- 1.5 Stop band $f_{nom} \pm 40$ kHz : ≥ 35 dB
- $f_{nom} \pm 910$ kHz : ≥ 70 dB
- 1.6 Spurious responses : ≥ 30 dB
- 1.7 Terminating impedance (input and output) : 3500 Ohm // -0.7 pF
- Coupling capacitance : -1.2 pF
- 1.8 Operating temperature range : -20°C to +70°C
- 1.9 Case : 2 x UM-1
- 1.10 Marking on the case :

MCF
70.0-
20/04

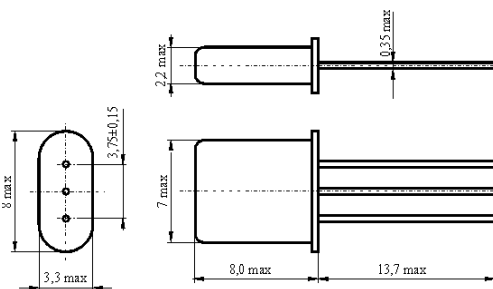
KRYSTALY
CZ
YYWW

YY = year
WW = week

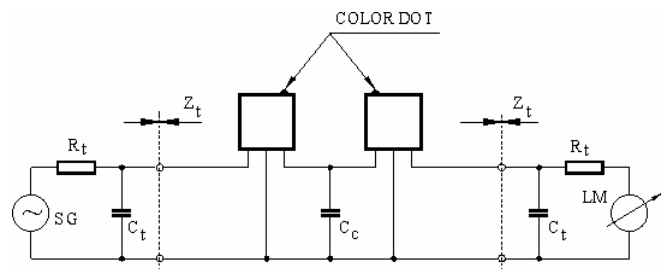
2. Characteristics MCF 70.0-20/04



Dimensions [mm]
Case UM-1



Measurement Circuit



edited	26.09.2011	P. Seidl
--------	------------	----------