



# SPECIFICATION FOR CRYSTAL FILTER MCF 70.0-25/06

Number: 92 271  
Drawing: 61 9578

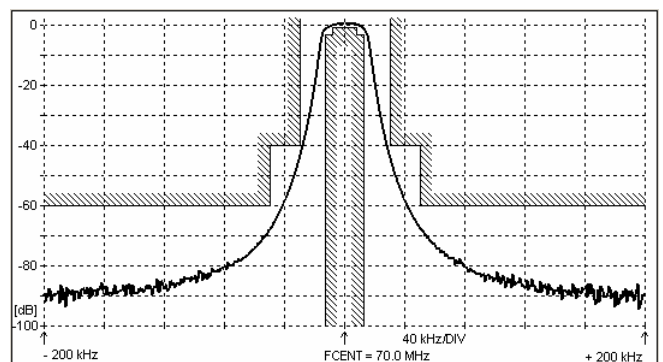
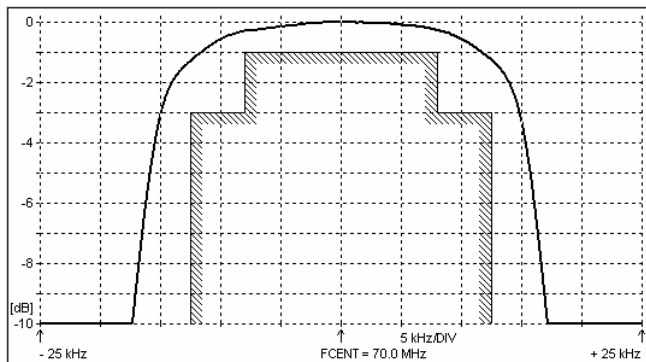
## 1. Electric values

- 1.0 Number of poles : 6 (fundamental mode)
- 1.1 Nominal centre frequency  $f_{nom}$  : 70.0 MHz
- 1.2 Bandwidth between 3 dB frequencies :  $\geq \pm 12.5$  kHz
- 1.3 Ripple at  $f_{nom} \pm 8.0$  kHz :  $\leq 1.0$  dB
- 1.4 Group delay distortion  $f_{nom} \pm 10.0$  kHz :  $\leq 20 \mu s$   
 $f_{nom} \pm 12.5$  kHz :  $\leq 50 \mu s$
- 1.5 Insertion loss :  $\leq 6.0$  dB
- 1.6 Stop band  $f_{nom} \pm 30$  kHz :  $\geq 40$  dB  
 $f_{nom} \pm 50$  kHz :  $\geq 60$  dB
- 1.7 Alternate attenuation :  $\geq 80$  dB (except spurious)
- 1.8 Terminating impedance ( input and output ) : 50 Ohm // 0 pF
- 1.9 Operating temperature range : -20°C to +70°C
- 1.10 Case : KF 13 (25.1 x 14.1 x 10.5 mm)
- 1.11 Marking on the case :

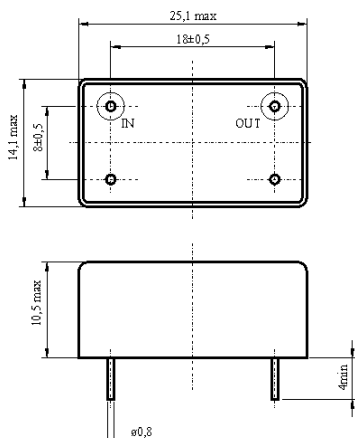
KRYSTALY CZ
YYWW
70.0-25/06

YY = year  
WW = week

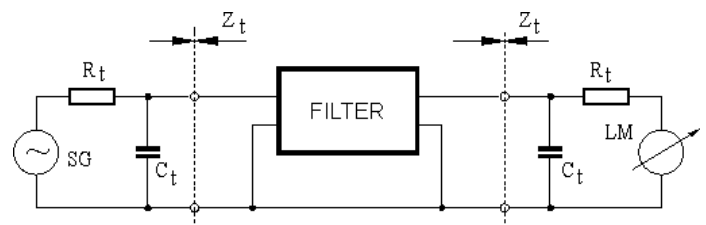
## 2. Characteristics MCF 70.0-25/06



### Dimensions [mm] Case KF 13



### Measurement Circuit



edited	11.04.2013	P. Seidl
--------	------------	----------