

SPECIFICATION FOR CRYSTAL FILTER
MCF 70.455-40/07

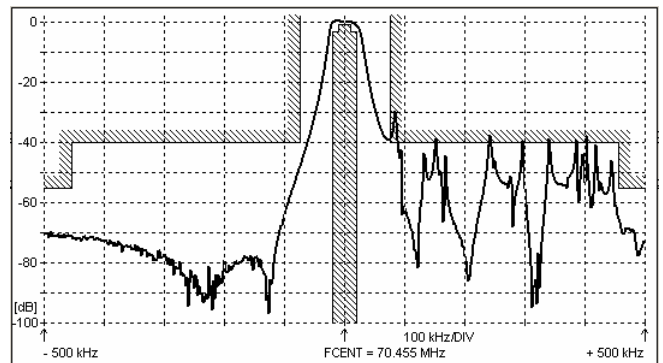
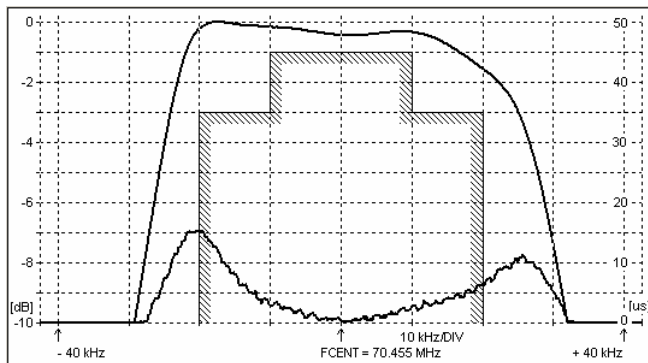
Number: 91 873
Drawing: 61 9578

1. Electric values

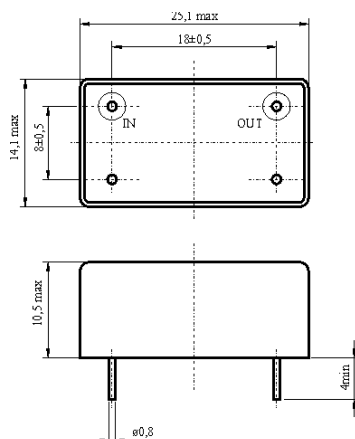
- | | |
|--|--------------------------------------|
| 1.0 Number of poles : | 4 (3 rd overtone) |
| 1.1 Nominal centre frequency f_{nom} : | 70.455 MHz |
| 1.2 Bandwidth between 3 dB frequencies : | $\geq \pm 20$ kHz |
| 1.3 Ripple at $f_{nom} \pm 10$ kHz : | ≤ 1.0 dB |
| 1.4 Insertion loss : | ≤ 6.0 dB |
| 1.5 Group delay distortion $f_{nom} \pm 4.0$ kHz : | $\leq 15 \mu s$ |
| 1.6 Stop band: $f_{nom} \pm 75$ kHz : | ≥ 40 dB (except spurious) |
| $f_{nom} \pm 455$ kHz : | ≥ 55 dB (spurious not accepted) |
| $f_{nom} \pm 825 \dots \pm 925$ kHz : | ≥ 60 dB (spurious not accepted) |
| 1.7 Spurious $f_{nom} + 100 \dots + 1000$ kHz : | ≥ 30 dB |
| 1.8 Terminating impedance (input and output) : | 50 Ohm // 0 pF |
| 1.9 Operating temperature range : | -40°C to +85°C |
| 1.10 Case : | KF 13 (25.1 x 14.1 x 10.5 mm) |
| 1.11 Marking on the case : | YY = year
WW = week |

KRYSTALY CZ YYWW MCF 70.455-40/07
--

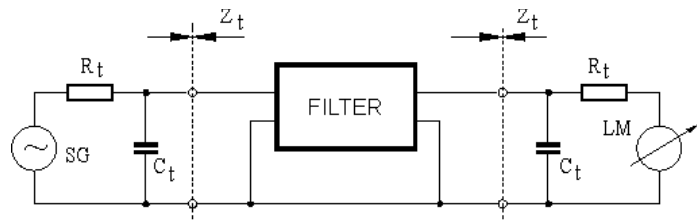
2. Characteristics MCF 70.455-40/07



Dimensions [mm]
Case KF 13



Measurement Circuit



edited	05.09.2011	P. Seidl
--------	------------	----------