

SPECIFICATION FOR CRYSTAL FILTER MCF 86.79-40/T2

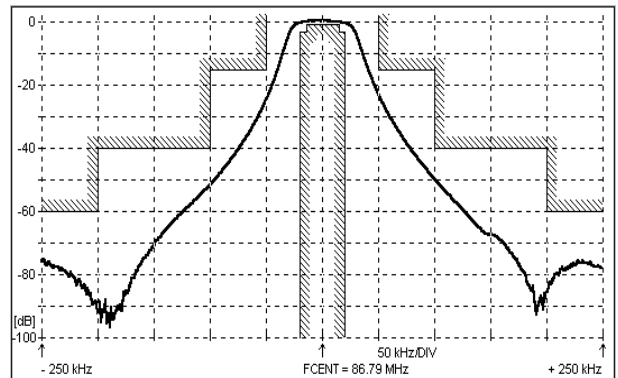
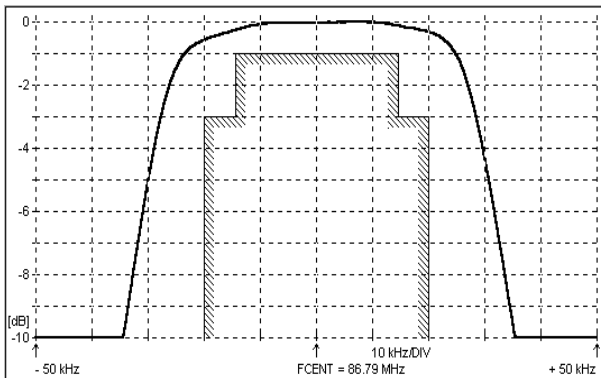
Number: 92 290
Drawing: 61 9578

1. Electric values

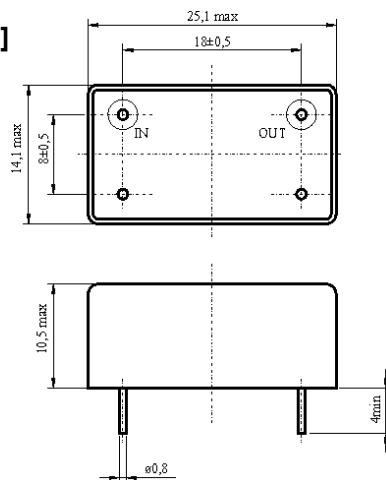
1.0 Number of poles:	4
1.1 Nominal centre frequency f _{nom} :	86 790 kHz (fundamental mode)
1.2 Bandwidth between 3 dB frequencies:	≥ ± 20 kHz
1.3 Ripple at f _{nom} ± 14.5 kHz:	≤ 1.0 dB
1.4 Insertion loss:	≤ 3.0 dB
1.5 Stop band: f _{nom} ± 50 kHz:	≥ 15 dB
f _{nom} ± 100 kHz:	≥ 40 dB
f _{nom} ± 200 kHz:	≥ 60 dB (except spurious)
1.6 Terminating impedance Input and Output :	50 Ohm // 0 pF
1.7 Maximum input power level (working / non-damaged):	-10 / 0 dBm
1.8 Operating temperature range:	- 20°C až + 70°C
1.9 Case:	KF 13 (25.1 x 14.1 x 10.5 mm)
1.11 Marking on the case :	YY - year WW - week



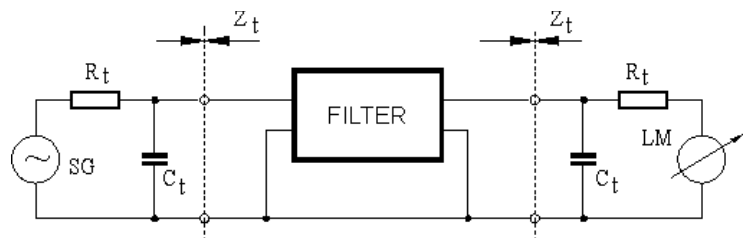
2. Characteristics MCF 86.79-40/T2



Dimensions[mm] Case KF 13



Measurement Circuit



edited | 28.08.2013 | P.Jungling