

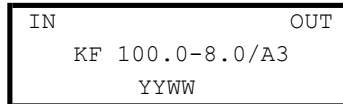
Front-end crystal filters  
KF 100.0-8.0/A3

Number: 92 579  
Drawing: 71 0073

1. Electric values

- 1.0 Number of poles: 4
- 1.1 Nominal centre frequency f<sub>nom</sub>: 100 000 kHz ( 5 overtone )
- 1.2 Bandwidth between 3 dB frequencies: >± 4,0 kHz
- 1.3 Ripple ( f<sub>nom</sub> ± 3,2 kHz): < 2,0 dB
- 1.4 Insertion loss: < 6,0 dB
- 1.5 Stop band:
  - f<sub>nom</sub> ± 25 kHz: ≥ 40 dB
  - f<sub>nom</sub> ± 50 kHz ... ± 5 MHz: ≥ 60 dB (except spurious)
- 1.6 Spurious response: ≥ 25 dB
- 1.7 Terminating impedance: 50 Ohm // 0 pF
- 1.8 Maximum input power level ( working / non-damaged ): -10 / +10 dBm
- 1.9 Operating temperature range: -20°C ... + 70°C  
Operable temperature range: -20°C ... + 80°C  
Storage temperature range: -40°C ... + 90°C
- 1.10 Case: KA 3 (with SMA female) 61.1 x 26.8 x 27.3 mm

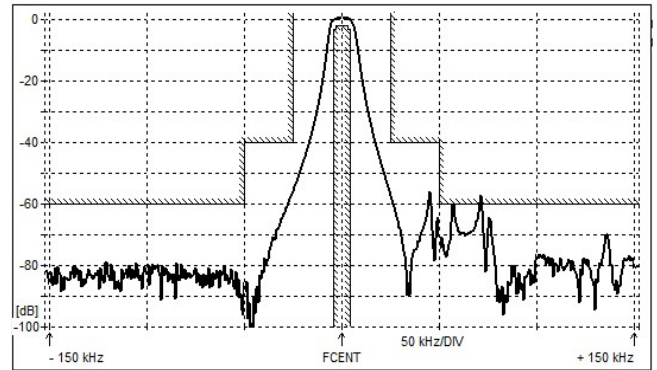
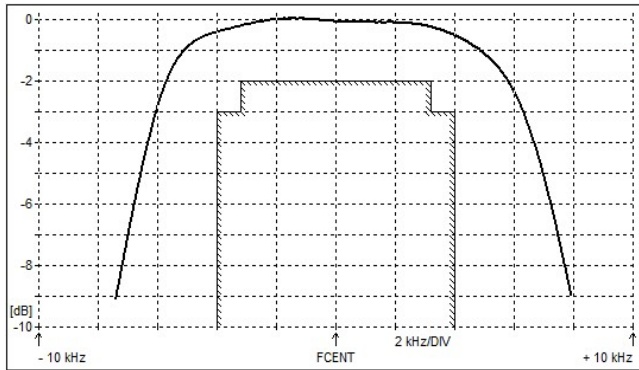
1.11 Marking on the case :



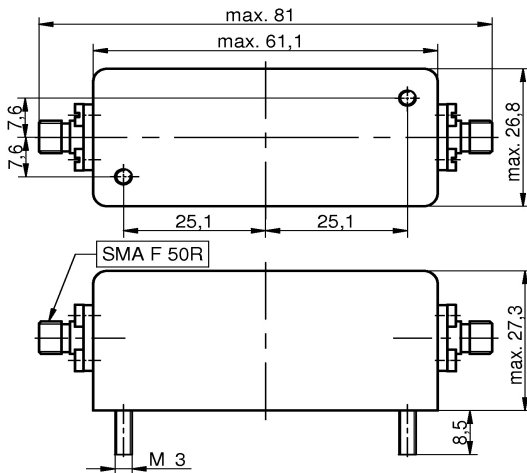
YY - year  
WW - week ( or customer's marking )

2. Characteristics

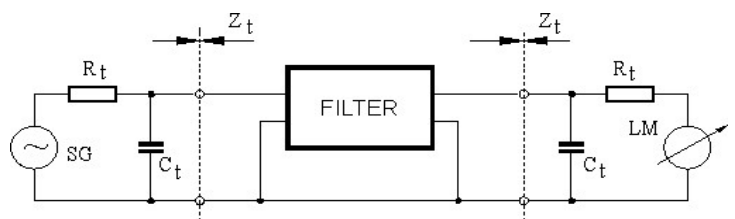
KF 100.0-8.0/A3



Dimensions KA3  
[mm]



Measurement Circuit



edited 18.03.2019 P.Jungling