

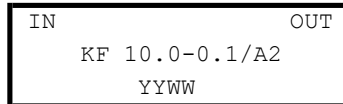
Front-end crystal filters
KF 10.0-0.1/A2

Number: 92 712
Drawing: 71 0114

1. Electric values

- 1.0 Number of poles: 3
- 1.1 Nominal centre frequency f_{nom}: 10 000 kHz (3 OT)
- 1.2 Bandwidth between 3 dB frequencies: >± 0,05 kHz
- 1.3 Ripple (f_{nom} ± 0,04 kHz): < 2,0 dB
- 1.4 Insertion loss: < 3,5 dB
- 1.5 Stop band:
 - f_{nom} ± 1 kHz: ≥ 40 dB
 - f_{nom} ± 3 kHz ... ± 5 MHz: ≥ 60 dB
- 1.6 Spurious response: ≥ 50 dB
- 1.7 Terminating impedance: 50 Ohm // 0 pF
- 1.8 Maximum input power level (working / non-damaged): -10 / +10 dBm
- 1.9 Operating temperature range: 0°C ... + 50°C
Operable temperature range: -20°C ... + 80°C
Storage temperature range: -40°C ... + 90°C
- 1.10 Case: KA 2 (with BNC female) 61.1 x 26.8 x 27.3 mm

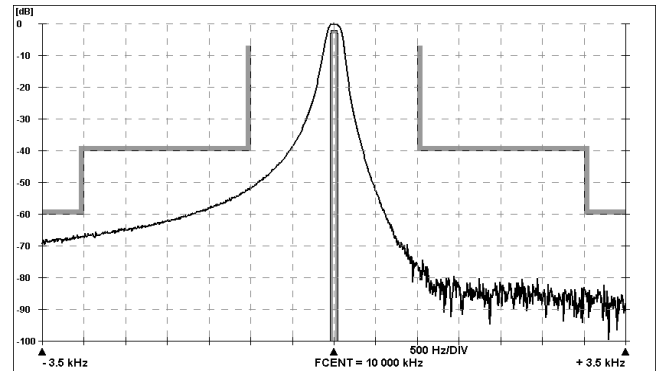
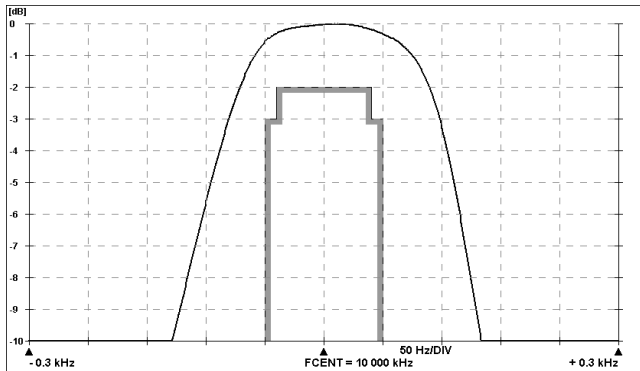
1.11 Marking on the case :



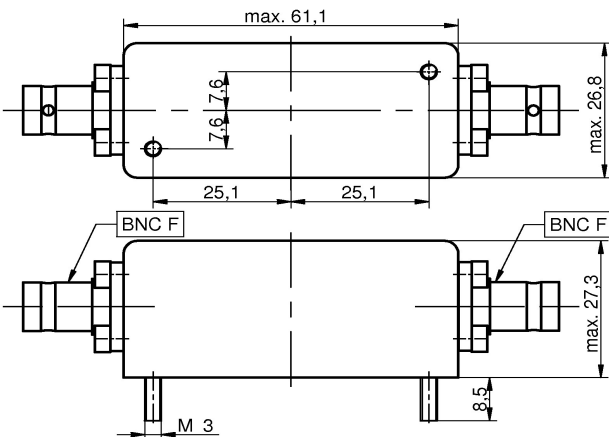
YY - year
WW – week (or customer's marking)

2. Characteristics

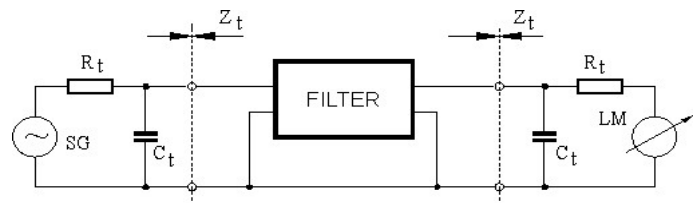
KF 10.0-0.1/A2



Dimensions KA2
[mm]



Measurement Circuit



edited | 04.09.2020 | P.Jungling