

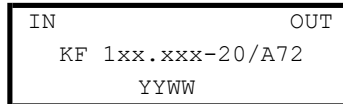
Front-end crystal filters
KF 118 MHz to 165 MHz-20/A72

Number: 99 009
Drawing: 71 0228

1. Electric values

- 1.0 Number of poles: 4
- 1.1 Nominal centre frequency f_{nom}: 118 000 ... 165 000 kHz (5 overtone)
- 1.2 Bandwidth between 3 dB frequencies: >± 10,0 kHz
- 1.3 Ripple (f_{nom} ± 7,0 kHz): < 1,5 dB
- 1.4 Insertion loss: < 6,5 dB
- 1.5 Stop band: f_{nom} ± 85 kHz: ≥ 50 dB
f_{nom} ± 100 kHz ... ± 5 MHz : ≥ 60 dB
Ultimate attenuation (except spurious): ≥ 60 dB
- 1.6 Spurious response: ≥ 35 dB
- 1.7 Terminating impedance: 50 Ohm // 0 pF
- 1.8 Maximum input power level (working / non-damaged): -5 / +10 dBm
- 1.9 Operating temperature range: -20°C ... + 60°C
Operable temperature range: -20°C ... + 80°C
Storage temperature range: -40°C ... + 90°C
- 1.10 Case: KA 72 (with SMB-male 60 x 25 x 20 mm)

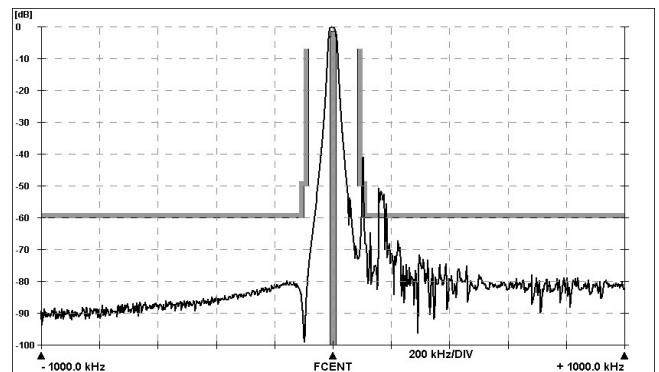
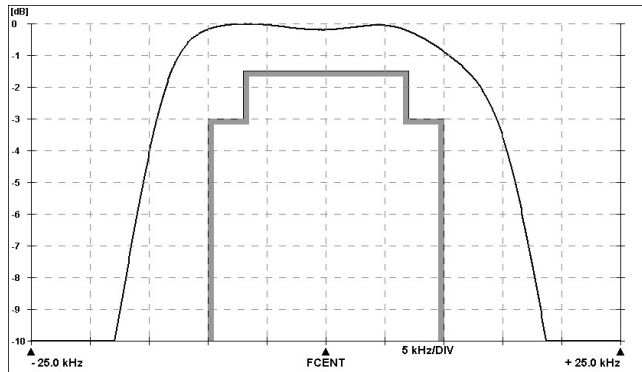
1.11 Marking on the case :



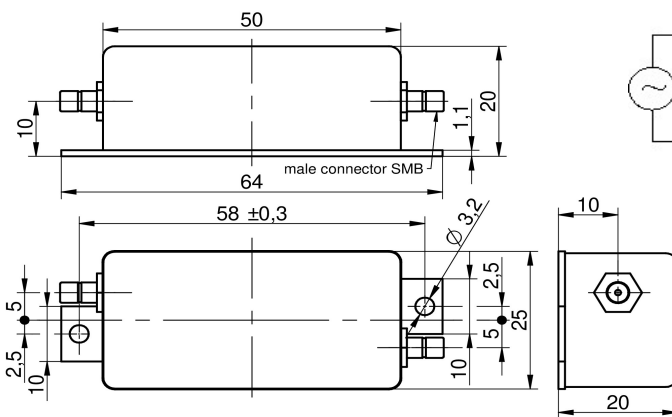
YY - year
WW – week (or customer's marking)

2. Characteristics

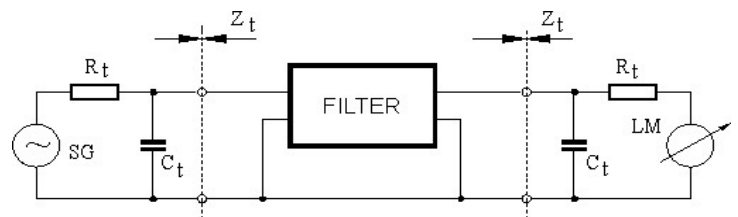
KF 118 MHz to 165 MHz-20/A72



Dimensions KA72
[mm]



Measurement Circuit



edited 24.03.2021 P.Jungling