

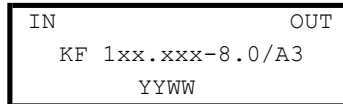
Fron-end crystal filters
KF 135 MHz to 180 MHz-8.0/A3

Number: 99 001
Drawing: 71 0073

1. Electric values

- | | | |
|------|--|--|
| 1.0 | Number of poles: | 4 |
| 1.1 | Nominal centre frequency f _{nom} : | 135 000 ... 180 000 kHz (5 overtone) |
| 1.2 | Bandwidth between 3 dB frequencies: | >± 4,0 kHz |
| 1.3 | Ripple (f _{nom} ± 2,0 kHz): | < 1,0 dB |
| 1.4 | Insertion loss: | < 8,0 dB |
| 1.5 | Stop band: f _{nom} ± 15 kHz: | ≥ 20 dB |
| | f _{nom} ± 35 kHz ... ± 5 MHz : | ≥ 45 dB |
| | Ultimate attenuation: | ≥ 60 dB |
| 1.6 | Spurious response: | ≥ 25 dB |
| 1.7 | Terminating impedance: | 50 Ohm // 0 pF |
| 1.8 | Maximum input power level (working / non-damaged): | -10 / +5 dBm |
| 1.9 | Operating temperature range: | 0°C ... + 60°C |
| | Operable temperature range: | -20°C ... + 80°C |
| | Storage temperature range: | -40°C ... + 90°C |
| 1.10 | Case: | KA 3 (with SMA female) 61.1 x 26.8 x 27.3 mm |

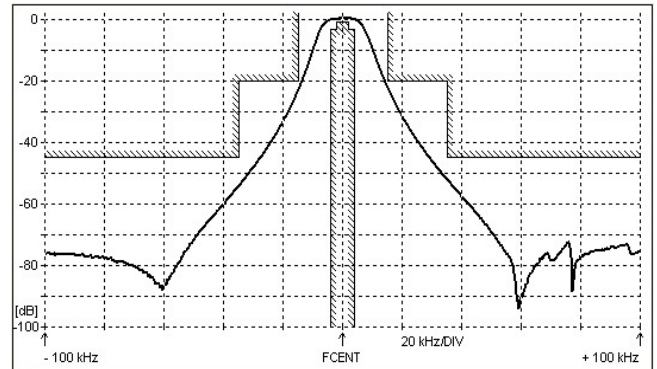
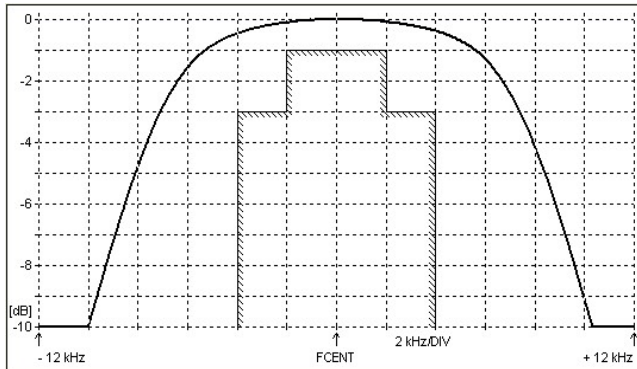
1.11 Marking on the case :



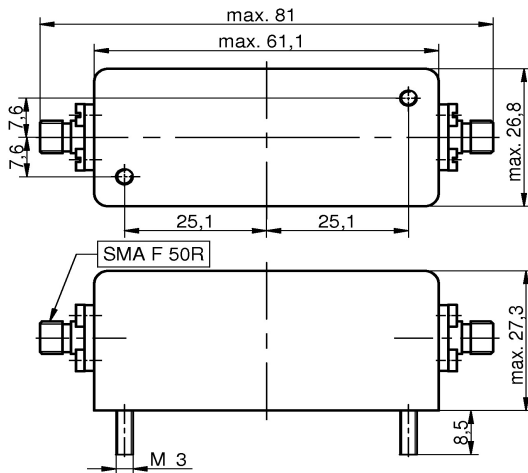
YY - year
WW – week (or customer's marking)

2. Characteristics

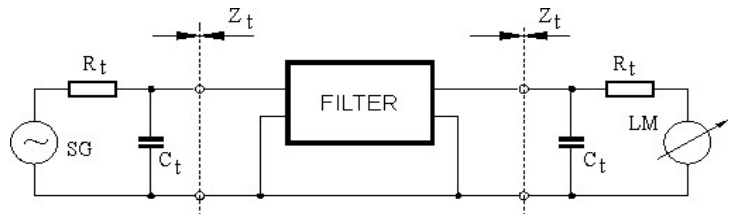
KF 135 MHz to 180 MHz-8.0/A3



Dimensions KA3
[mm]



Measurement Circuit



edited 07.10.2020 P.Jungling