

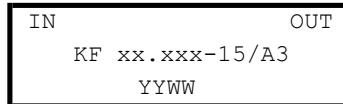
Front-end crystal filters
KF 60 MHz to 99 MHz-15/A3

Number: 99 012
Drawing: 71 0073

1. Electric values

- 1.0 Number of poles: 4
- 1.1 Nominal centre frequency f_{nom}: 60 000 ... 99 000 kHz (3 overtone)
- 1.2 Bandwidth between 3 dB frequencies: >± 7,5 kHz
- 1.3 Ripple (f_{nom} ± 5,0 kHz): < 1,0 dB
- 1.4 Insertion loss: < 4,0 dB
- 1.5 Stop band:
 - f_{nom} ± 30 kHz: ≥ 20 dB
 - f_{nom} ± 60 kHz ... ± 5 MHz : ≥ 45 dB
- 1.6 Spurious response: ≥ 20 dB
- 1.7 Terminating impedance: 50 Ohm // 0 pF
- 1.8 Maximum input power level (working / non-damaged): -10 / +10 dBm
- 1.9 Operating temperature range: -20°C ... + 70°C
Operable temperature range: -20°C ... + 80°C
Storage temperature range: -40°C ... + 90°C
- 1.10 Case: KA 3 (with SMA female) 61.1 x 26.8 x 27.3 mm

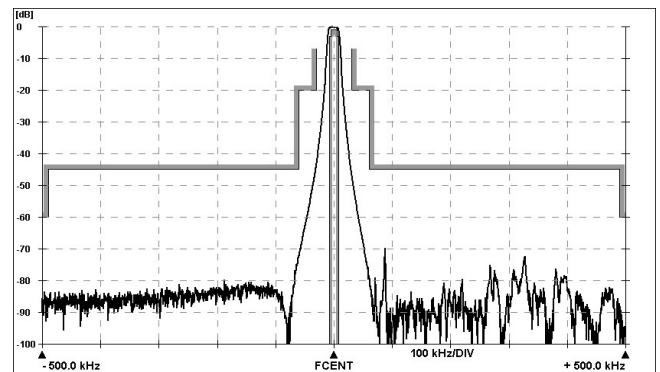
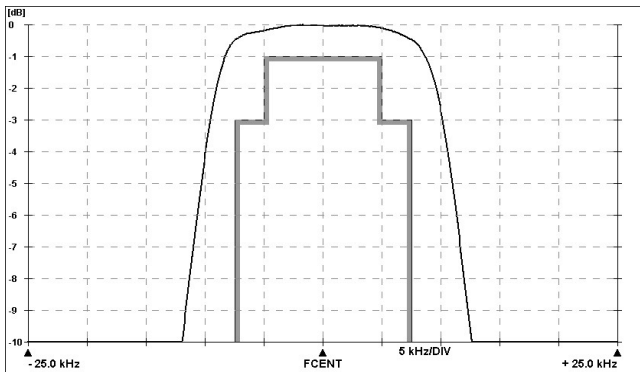
1.11 Marking on the case :



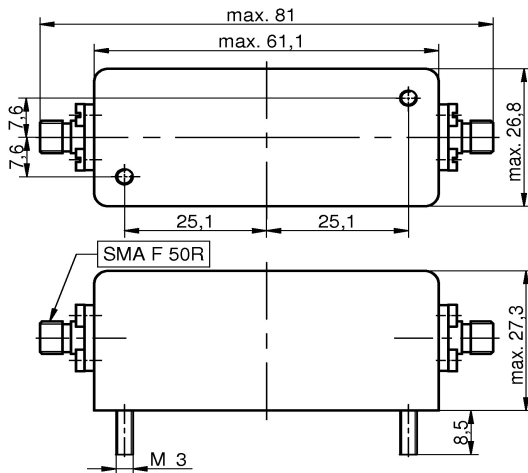
YY - year
WW – week (or customer's marking)

2. Characteristics

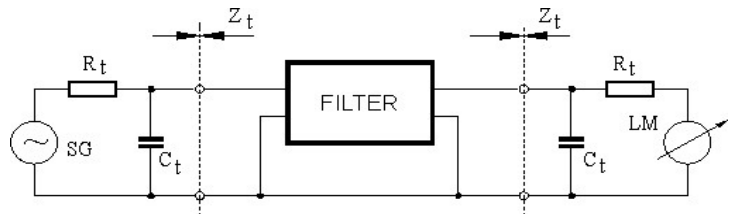
KF 60 MHz to 99 MHz-15/A3



Dimensions KA3
[mm]



Measurement Circuit



edited 18.11.2019 P.Jungling