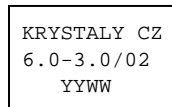


# SPECIFICATION FOR CRYSTAL FILTER MCF 6.0-3.0/02

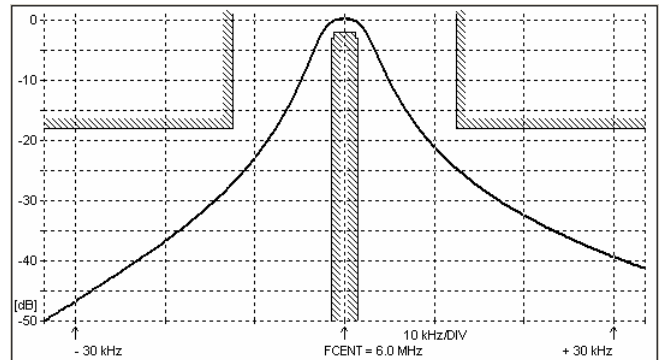
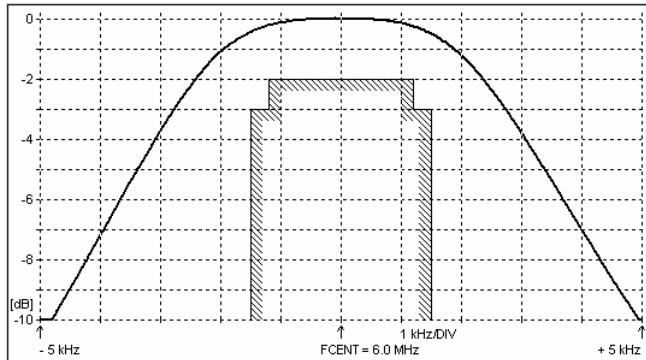
Number: 91 791  
Drawing: 61 9569

## 1. Electric values

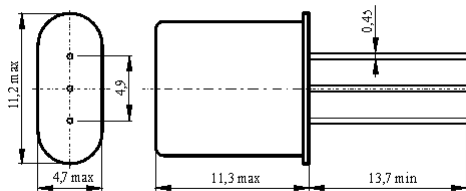
1.0 Number of poles :	2
1.1 Nominal centre frequency $f_{nom}$ :	6.0 MHz
1.2 Bandwidth between 3 dB frequencies :	$\geq \pm 1.5$ kHz
1.3 Ripple in band $f_{nom} \pm 1.2$ kHz :	$\leq 2.0$ dB
1.4 Insertion loss :	$\leq 3.0$ dB
1.5 Stop band $f_{nom} \pm 12.5$ kHz :	$\geq 18$ dB
$f_{nom} \pm 1.5 \dots \pm 5.0$ MHz :	$\geq 65$ dB
1.6 Spurious :	$\geq 5$ dB
1.7 Terminating impedance ( input and output ) :	5500 Ohm // -2.0 pF
1.8 Operating temperature range :	-20°C to +70°C
1.9 Case :	HC-49U / 3pin
1.10 Marking on the case :	YY = year WW = week



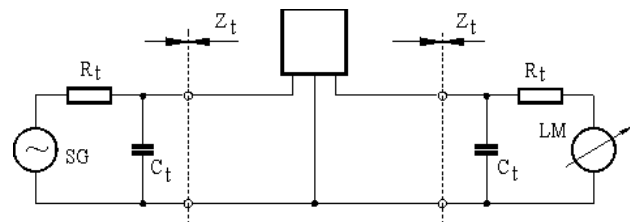
## 2. Characteristics MCF 6.0-3.0/02



## Dimensions [mm] Case HC-49U / 3 pin



## Measurement Circuit



edited 23.08.2011 P. Seidl