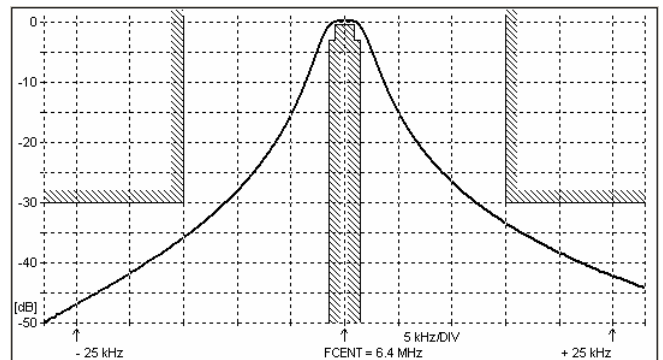
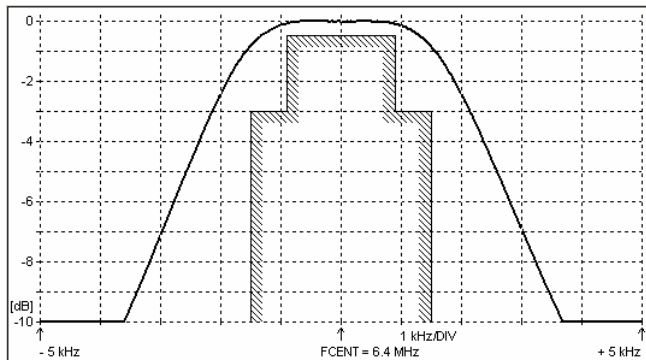
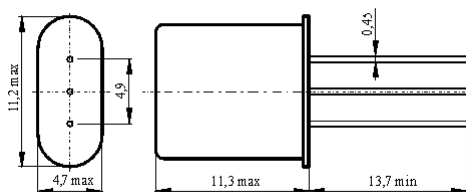
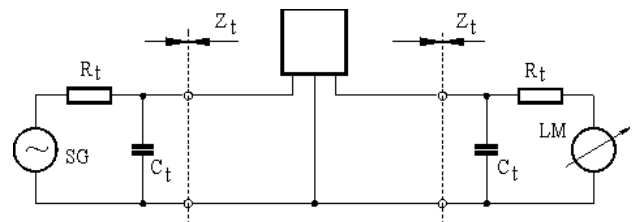
**SPECIFICATION FOR CRYSTAL FILTER
MCF 6.4-3.0/02**Number: 92 256
Drawing: 61 9569**1. Electric values**

1.0 Number of poles :	2
1.1 Nominal centre frequency f_{nom} :	6.4 MHz
1.2 Bandwidth between 3 dB frequencies :	$\geq \pm 1.5$ kHz
1.3 Ripple in band $f_{nom} \pm 0.9$ kHz :	≤ 0.5 dB
1.4 Insertion loss :	≤ 3.0 dB
1.5 Stop band $f_{nom} \pm 15$ kHz :	≥ 30 dB
$f_{nom} \pm 200$ kHz ± 5.0 MHz :	≥ 50 dB
1.6 Spurious :	≥ 10 dB
1.7 Terminating impedance (input and output) :	4000 Ohm // 2.0 pF
1.8 Operating temperature range :	-30°C to +70°C
1.9 Case :	HC-49U / 3pin
1.10 Marking on the case :	YY = year WW = week

KRYSTALY CZ 6.4-3.0/02 YYWW

2. Characteristics MCF 6.4-3.0/02**Dimensions [mm]
Case HC-49U / 3 pin****Measurement Circuit**

edited	20.08.2012	P. Seidl
--------	------------	----------