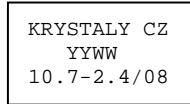


SPECIFICATION FOR CRYSTAL FILTER
MCF 10.7-2.4/08

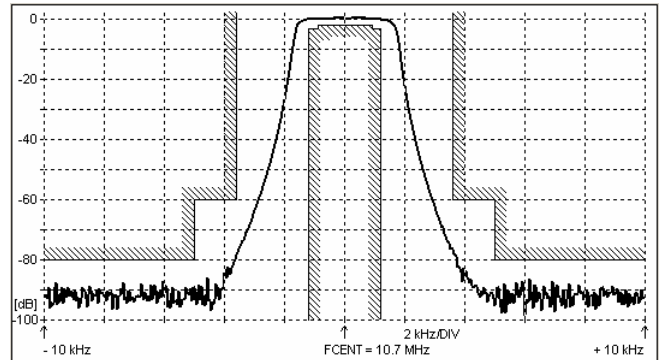
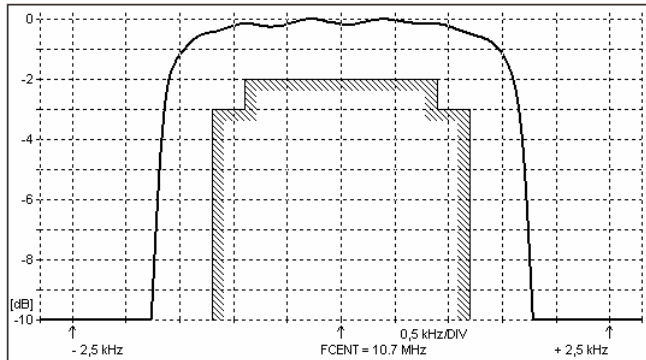
Number: 92 247
Drawing: 61 9533

1. Electric values

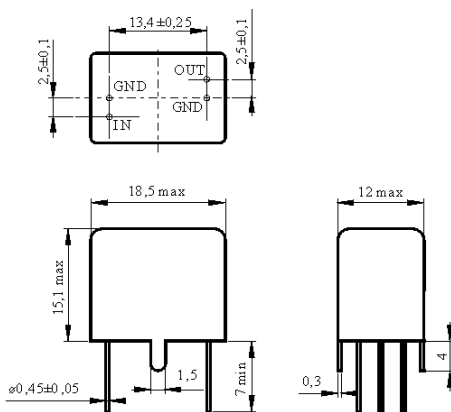
- | | |
|--|------------------------------|
| 1.0 Number of poles : | 8 |
| 1.1 Nominal centre frequency f_{nom} : | 10.7 MHz |
| 1.2 Bandwidth between 3 dB frequencies : | $\geq \pm 1.2$ kHz |
| 1.3 Ripple at $f_{nom} \pm 0.9$ kHz : | ≤ 2.0 dB |
| 1.4 Insertion loss : | ≤ 5.0 dB |
| 1.5 Stop band $f_{nom} \pm 3.6$ kHz : | ≥ 60 dB |
| $f_{nom} \pm 5.0 \dots \pm 300$ kHz : | ≥ 80 dB |
| 1.6 Terminating impedance (input and output) : | 500 Ohm // 20 pF |
| 1.7 Operating temperature range : | -20°C to +70°C |
| 1.8 Case : | KV 5 (18.5 x 12.0 x 15.1 mm) |
| 1.9 Marking on the case : | YY = year
WW = week |



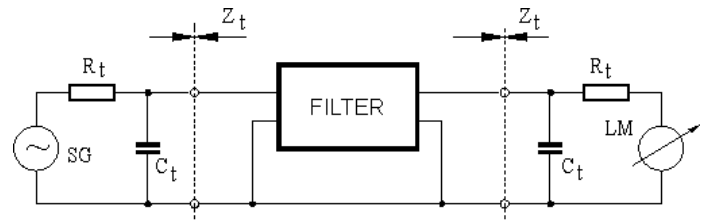
2. Characteristics MCF 10.7-2.4/08



Dimensions [mm]
Case KV 5



Measurement Circuit



edited	06.06.2012	P. Seidl
--------	------------	----------