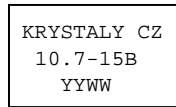


**SPECIFICATION FOR CRYSTAL FILTER  
MCF 10.7-15B**

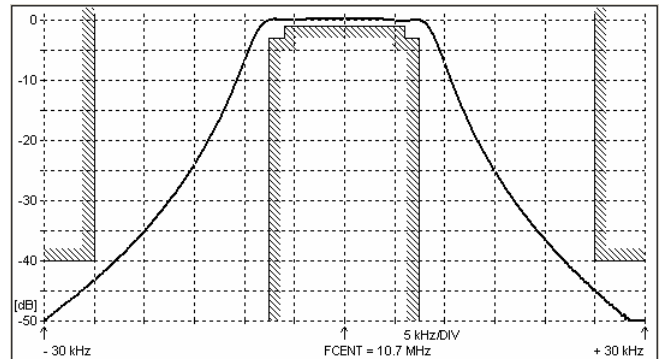
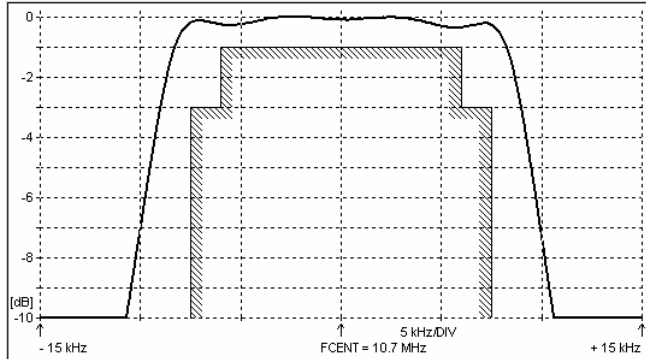
**Number: 91 925  
Drawing: 61 9573**

**1. Electric values**

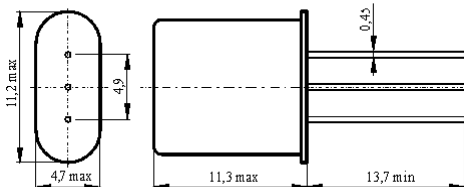
1.0 Number of poles :	4
1.1 Nominal centre frequency $f_{nom}$ :	10.7 MHz
1.2 Bandwidth between 3 dB frequencies :	$\geq \pm 7.5$ kHz
1.3 Ripple in band $f_{nom} \pm 6.0$ kHz :	$\leq 1.0$ dB
1.4 Insertion loss :	$\leq 2.5$ dB
1.5 Stop band $f_{nom} \pm 25$ kHz :	$\geq 40$ dB
$f_{nom} + 300 \dots + 1000$ kHz :	$\geq 65$ dB
$f_{nom} - 100 \dots - 1000$ kHz :	$\geq 80$ dB
1.6 Terminating impedance ( input and output ) :	3000 Ohm // 1.5 pF
Coupling capacitance :	5.0 pF
1.7 Operating temperature range :	-30°C až +70°C
1.8 Case :	2 x HC-49U / 3pin
1.9 Marking on the case :	YY = year WW = week



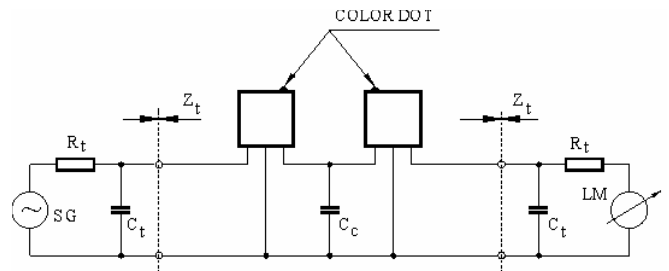
**2. Characteristics MCF 10.7-15B**



**Dimensions [mm]  
Case HC-49U / 3 pin**



**Measurement Circuit**



edited 12.08.2011 P. Seidl