

# SPECIFICATION FOR CRYSTAL FILTER MCF 14.040...14.115-7.5/04

Number: 92 243  
Drawing: 61 9573

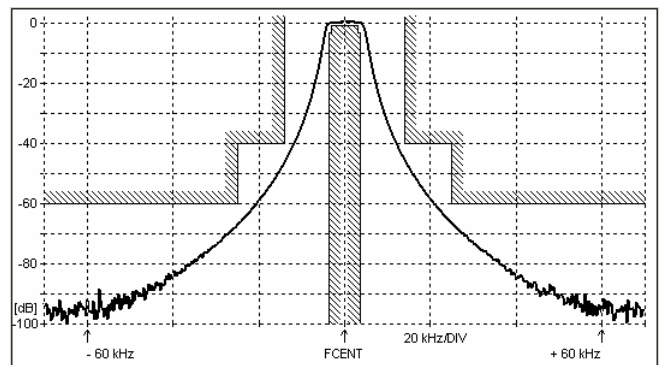
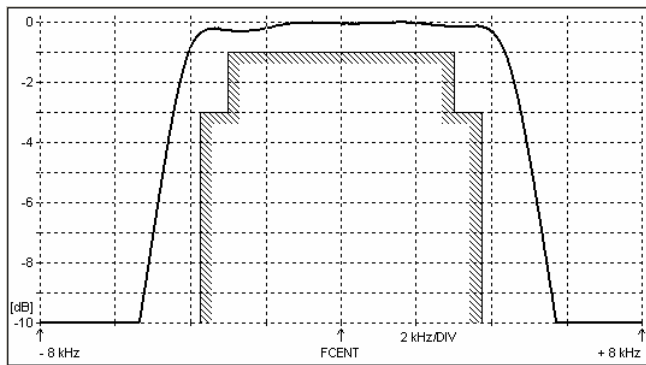
= This set of crystal filters is determined for the preselector of amateur transceivers =

## 1. Electric values

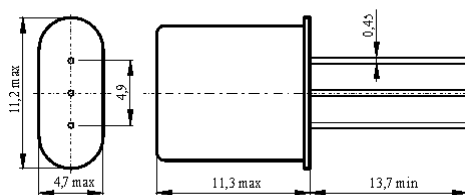
1.0 Number of poles :	4
1.1 Nominal centre frequency $f_{nom}$ :	14.040 MHz, 14.055 MHz, 14.070 MHz 14.085 MHz, 14.100 MHz, 14.115 MHz
1.2 Bandwidth between 3 dB frequencies :	$\geq \pm 3.75$ kHz
1.3 Ripple in band $f_{nom} \pm 3.0$ kHz :	$\leq 1.0$ dB
1.4 Insertion loss :	$\leq 2.5$ dB
1.5 Stop band $f_{nom} \pm 14$ kHz :	$\geq 40$ dB
$f_{nom} \pm 25 \dots \pm 1000$ kHz :	$\geq 60$ dB
1.6 Spurious :	$\geq 35$ dB
1.7 Terminating impedance ( input and output ) :	1200 Ohm // 5.4 pF
Coupling capacitance :	15.5 pF
1.8 Operating temperature range :	-20°C to +70°C
1.9 Case :	2 x HC-49U / 3pin
1.10 Marking on the case :	YY = year WW = week

KRYSTALY CZ 14.xxx-7.5/04 YYWW
--------------------------------------

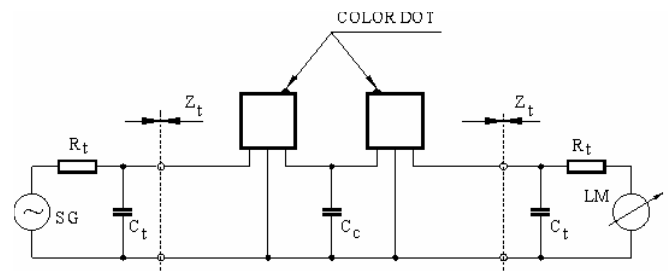
## 2. Characteristics MCF 14.040...14.115-7.5/04



### Dimensions [mm] Case HC-49U / 3 pin



### Measurement Circuit



edited	28.05.2012	P. Seidl
--------	------------	----------