



SPECIFICATION FOR CRYSTAL FILTER
MCF 20.0-5A

Number: 91 789
Drawing: 61 9570

1. Electric values

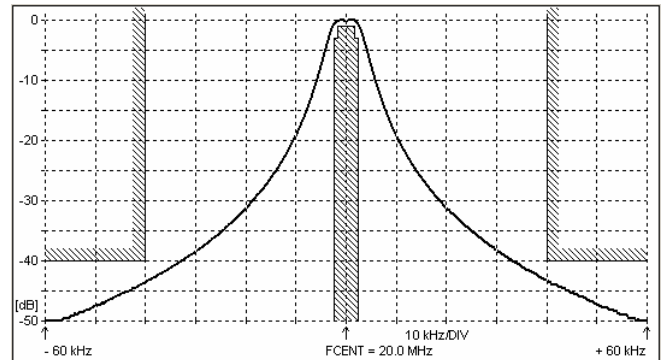
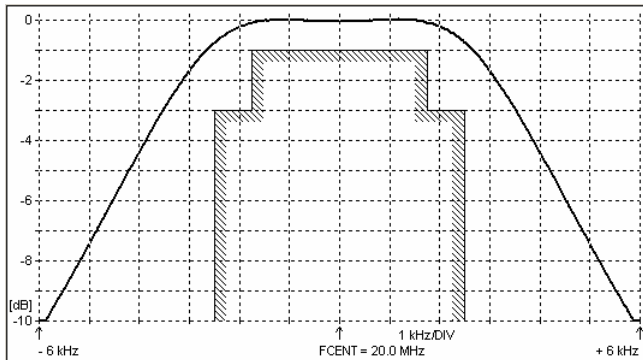
- 1.0 Number of poles : 2
- 1.1 Nominal centre frequency f_{nom} : 20.0 MHz
- 1.2 Bandwidth between 3 dB frequencies : $\geq \pm 2.5$ kHz
- 1.3 Ripple at $f_{nom} \pm 1.75$ kHz : ≤ 1.0 dB
- 1.4 Insertion loss : ≤ 1.0 dB
- 1.5 Stop band: $f_{nom} \pm 40$ kHz : ≥ 40 dB
 $f_{nom} \pm 500 \dots \pm 5000$ kHz : ≥ 50 dB
- 1.6 Terminating impedance (input and output) : 850 Ohm // 8.0 pF
- 1.7 Operating temperature range : -20°C až +70°C
- 1.8 Case : UM-1
- 1.9 Marking on the case :

MCF
20.0-5A

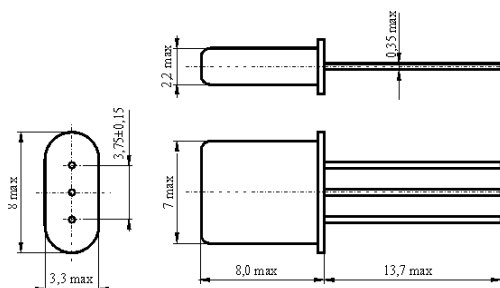
KRYSTALY
CZ
YYWW

YY = year
WW = week

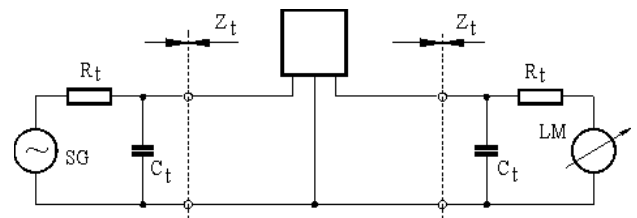
2. Characteristics MCF 20.0-5A



Dimensions [mm]
Case UM-1



Measurement Circuit



edited	14.06.2011	P. Seidl
--------	------------	----------